

A group of seven diverse children of various ethnicities are smiling and lying on a green lawn. The children are of different ages, from young children to teenagers. The background is a soft-focus green field with trees.

QFCC Community Perceptions Survey 2022

Research Report



Prepared for: Queensland Family and Child Commission
Date: 18 July 2022



Contact

290 Boundary Street
Spring Hill Qld 4000
PO Box 637 Spring Hill
QLD 4064 Australia

Phone: 07 3367 8557

Email: mcr@mcrpl.com.au

ABN 75 057 292 207

TABLE OF CONTENTS

1. INTRODUCTION.....	4
2. METHOD	5
3. FINDINGS	9
3.1 OVERALL CONFIDENCE AND TRUST IN QUEENSLAND CHILD PROTECTION SYSTEM	9
3.2 WHICH ORGANISATIONS OR INDIVIDUALS WOULD A CONCERN ABOUT CHILD SAFETY BE REPORTED TO?	12
3.3 PROTECTIONS AND SUPPORTS FOR CHILDREN AND YOUNG PEOPLE	16
3.4 UNDERSTANDING OF CONVENTION ON THE RIGHTS OF THE CHILD	26
3.5 DECISIONS MADE IN THE BEST INTEREST OF CHILDREN AND YOUNG PEOPLE	28
3.6 VIEWS OF CHILDREN AND YOUNG PEOPLE LISTENED TO AND VALUED.....	34
3.7 DISCRIMINATION OF CHILDREN AND YOUNG PEOPLE	40
3.8 MENTAL HEALTH.....	47
3.9 ACCESSING YOUTH MENTAL HEALTH SERVICES	51
3.10 PRIORITISATION, SAFETY AND INCLUSION OF CHILDREN AND YOUNG PEOPLE.....	57
3.11 OVERSIGHT OF THE QUEENSLAND SYSTEMS	64
3.12 MINIMUM AGE FOR A CHILD TO BE INCARCERATED.....	67
4. APPENDICES.....	71
APPENDIX A – SURVEY ITEMS.....	71
APPENDIX B – SAMPLE COMPOSITION	74
APPENDIX C – FIELDWORK REPORT	76
APPENDIX D – SAMPLING ERROR CHART.....	78
APPENDIX E – REGIONAL BOUNDARIES.....	79

1. Introduction

Background

The purpose of the Queensland Family and Child Commission (QFCC) is to influence change that improves the safety and wellbeing of Queensland's children, young people and their families. QFCC's vision is that every Queensland child and young person is loved, respected and has their rights upheld.

The QFCC seeks to ensure systems are accountable for the impact they have on children, young people and their families; and to raise awareness and advocate for children, young people and their families.

MCR was commissioned by the QFCC to undertake research with adult Queenslanders to collect data on the community's perspectives about children and young people and the systems designed to support them.

A similar survey was undertaken and reported on in 2017, 2019, 2020 and 2021.

Research objectives

The main objective of this project was to continue to measure confidence and trust in the Queensland child protection system using a representative sample of Queensland adults.

The project also sought to understand community perspectives on a variety of issues in Queensland, including:

- Awareness of where to report child protection concerns or seek help
- Views about whether children and young people are protected and supported by various systems
- Perceptions about whether decisions are being made in the best interests of children and young people by various systems
- Perceptions about whether the views of children and young people are listened to and valued by various systems
- Perceptions about whether specific groups of children and young people experience discrimination
- Perceptions about accessibility of mental health services and barriers experienced when trying to access these services
- Views about how children and young people are prioritised by government, portrayed by media and involved in community
- Perceptions of the adequacy of oversight of child protection and youth justice systems
- Views about the minimum age of incarceration for children.

2. Method

The method comprised an online self-completion survey and an offline (face-to-face and telephone) survey.

Sampling frame

The survey's sampling frame was Queensland, state-wide. Postcodes were used to categorise the residential location of respondents as South East Queensland, Southern Queensland, Central Queensland and Northern Queensland. Details of the boundaries of these regions can be found under Appendix E.

Sample size and characteristics

The total sample size achieved in 2022 was n=2,509 Queensland adults (Online = 2,417; Offline* = 92). Targets were set to ensure the sample was representative in terms of age, gender and geographic region. However, Queenslanders who identified as Aboriginal and/or Torres Strait Islander were deliberately oversampled such that of the 2,509 Queenslanders surveyed, 224 (9%) identified as Aboriginal and/or Torres Strait Islander. See Table 2.1 below for the demographic characteristics of respondents.

Table 2.1: Demographic characteristics of respondents, n=2,509

Demographic characteristics 2022		n	%	Target
Gender	Man or male	1,201	48	50
	Woman or female	1,302	52	50
	Non-binary	5	<1%	-
	Uses a different term	1	<1%	-
Age group	18-24 years	293	12	45
	25-39 years	836	33	
	40-59 years	605	24	55
	60+ years	775	31	
Region	South East	1,254	50	50
	Northern	503	20	50
	Central	250	10	
	Southern	502	20	
Aboriginal and Torres Strait Islander	Identify	224	9	7.5
	Do not identify	2,285	91	92.5

- No targets were set for this criterion

* The offline method refers to the sample boost of Queenslanders who identified as Aboriginal and/or Torres Strait Islander which was conducted using a mix of face-to-face interviewing (n=64), telephone interviewing (n=23) and self-completion surveying (via a link to the online survey) (n=5). In addition to the 92 interviews collected via this offline method, an additional 132 were collected in the online survey.

Table 2.2 shows the small proportion of the sample who had recent (within the past five years) personal experience with the child protection and family support system as a parent, child, carer, service provider or other professional.

Table 2.2: Contact with child protection and family support system (current or within past five years)

Contact with child protection and family support system (current or within past five years) 2022	n	%	Target
<i>n=2,414 answered this item</i>			
As a parent	215	9	-
As a child	110	4	-
As a carer	109	4	-
As a service provider	139	6	-
In any other professional capacity (e.g. doctor, nurse, teacher, etc.)	263	11	-
SUB-TOTAL At least one contact with child protection and family support system	490	20	-

- No targets were set for this criterion

Fieldwork statistics and dates

The average (median) time taken to complete the survey in the online mode was 7 minutes. For those completing via an offline method, the average completion time was 16 minutes.

The fieldwork dates for the survey were as follows:

- Online method: 20 May to 13 June 2022
- Offline method: 25 May to 14 June 2022.

Appendix C contains the fieldwork report and associated response rates for each method.

Fieldwork partner

MCR's fieldwork partner Ipsos was responsible for collecting, storing and coding the online and offline survey data. Ipsos has ISO 20252 accreditation and is a member of the Australian Data and Insights Association.

The online sample was sourced via the following panels: I-say/Ipsos Panel (35%), PureProfile (14%), Octopus (29%) and Fulcrum (22%).

The offline method was conducted by Ipsos via their in-house specialist Aboriginal and Torres Strait Research Unit (ATSIRU). The interviews were conducted in language where necessary. Four interviewers were used in regional areas (Torres Strait, Cairns, Doomadgee and Townsville). ATSIRU Team Leaders use their networks and local knowledge to approach people either via phone or face-to-face in their communities to complete the interview.

Data analysis

At the completion of fieldwork, the survey results were analysed using Q Research Software. The analysis took the form of frequency counts for each question and cross analysis of responses to all questions by selected demographic and behavioural factors (cross tabulations). In the data analysis stage, all survey data were subjected to tests of significance for each survey question. Z-tests were applied to all frequency counts versus the average as well as between sub-groups (in the data tables, red and blue indicate a difference, higher or lower than the average with a 95% confidence level). The average calculation is based on the responses of all respondents to a question. It should be noted that where a key result differs significantly from the average (and is referred to in the report's commentary), it is not necessarily the group with the highest or lowest percentage (small cell sizes mean sometimes there is a group with a higher or lower percentage, however this does not differ significantly from the average after taking sampling error into account). Blank cells in tables indicate 0%.

Weighting

The data have not been weighted.

Sampling error

All surveys are subject to multiple sources of error which are most often not possible to quantify or estimate, including sampling error, coverage error, error associated with non-response, error associated with question wording and response options. Appendix D contains a table that details the level of sampling error associated with various cell sizes for this survey (at the 95% confidence level).

Questionnaire

A copy of the questionnaire can be found at Appendix A. While all questions were presented to all respondents, responses were not mandatory.

Most questions comprised a pre-defined codeframe for respondents to select from or to indicate their agreement with a range of statements. There was one opportunity for respondents to answer in their own words (an open-ended question) and responses were subsequently coded into key themes for analysis.

Comparison of 2022 and 2021 data

Three questions in 2022 can be compared with data from 2021:

- Awareness of where to report concerns or seek help in relation to a child's safety or wellbeing
- Overall confidence and trust in the child protection system
- Contact with the child protection and family support system.



Disclaimer

MCR is a member of ADIA and abides by The Research Society's Code of Professional Behaviour. The Code of Professional Behaviour can be downloaded at www.theresearchsociety.com.au. Under the Code of Professional Behaviour – information about Client's businesses, their commissioned market research data and findings remain confidential to the clients unless both clients and researchers agree the details of any publications.

As is our normal practice, we emphasise that any market size estimates or marketing recommendations in this report can be influenced by a number of unforeseen events or by management decisions. Therefore no warranty can be given that the information included will be predictive of a desired outcome.

3. Findings

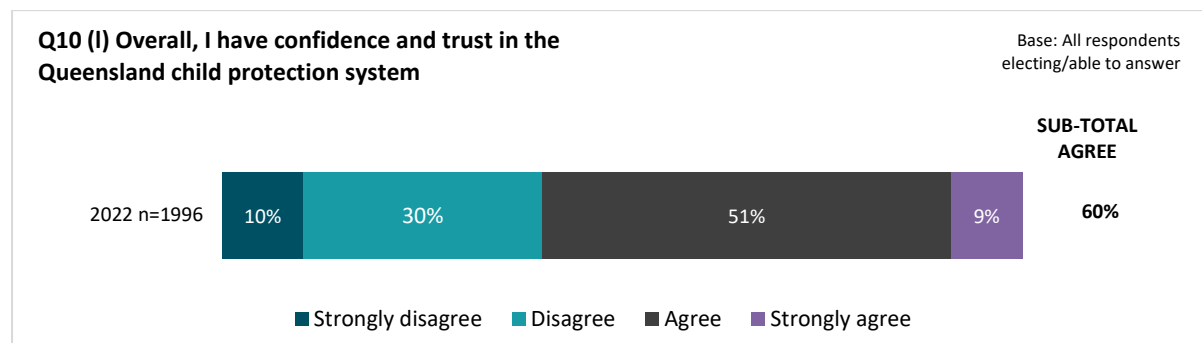
3.1 Overall confidence and trust in Queensland child protection system

Q10(I). How much do you agree or disagree with the following statement about the current child protection system in Queensland? Overall, I have confidence and trust in the Queensland child protection system.

3.1.1 2022 result

In the 2022 survey, 60% of respondents agreed (agree/strongly agree) with the statement 'Overall, I have confidence and trust in the Queensland child protection system' (51% agree; 9% strongly agree). A total of 40% disagreed (30% disagree; 10% strongly disagree).

Figure 3.1.1: Overall confidence and trust in the Queensland child protection system (2022)

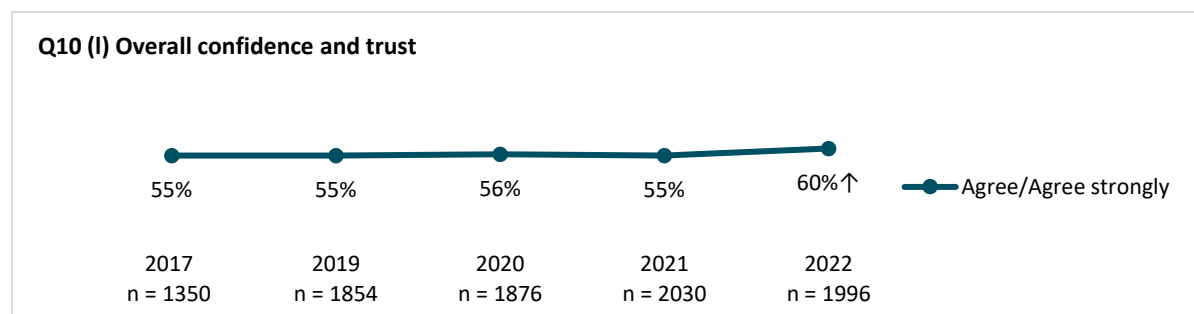


In 2022, 263 respondents answered 'no opinion' and 250 answered 'don't know'. These respondents have been removed from the base when reporting results (the base is therefore those who elected or were able to answer, n=1996).

3.1.2 Comparison to previous survey data

There was a statistically significant increase in confidence and trust in the Queensland child protection system in 2022 in contrast to the 2021 survey. The total level of agreement in 2022 (60% agree/strongly agree) was significantly higher than that recorded for the 2021 survey (55% agree/strongly agree) and in years captured prior to this (55% in 2017, 55% in 2019, and 56% in 2020).

Figure 3.1.2: Overall confidence and trust in the Queensland child protection system 2017-2022 trend



↑ ↓ indicates the result is a significant increase or decrease from the prior year result

Respondents who elected not to answer or were unable to provide an agreement rating were removed from the base of this question to allow for comparison between 2017 and subsequent results:

- In 2017, n=294 answered 'no opinion/don't know' (no opinion and don't know were combined as a single code in 2017), 59 declined to answer the question. These respondents have been removed from the base when reporting results (the base is therefore those who elected or were able to answer in 2017, n=1350)
- In 2019, 207 respondents answered 'no opinion', 435 answered 'don't know' and 7 declined to answer the question. These respondents have been removed from the base when reporting results (the base is therefore those who elected or were able to answer in 2019, n=1854)
- In 2020, 238 respondents answered 'no opinion', 407 answered 'don't know' and 9 declined to answer the question. These respondents have been removed from the base when reporting results (the base is therefore those who elected or were able to answer in 2020, n=1876)
- In 2021, 202 respondents answered 'no opinion', 287 answered 'don't know' and 1 declined to answer the question. These respondents have been removed from the base when reporting results (the base is therefore those who elected or were able to answer in 2021, n=2030)
- In 2022, 263 respondents answered 'no opinion' and 250 answered 'don't know'. These respondents have been removed from the base when reporting results (the base is therefore those who elected or were able to answer, n=1996)

3.1.3 Sub-group differences (2022)

The following sub-groups were significantly more likely than average (60%) to agree/strongly agree that overall they have confidence and trust in the Queensland child protection system (see Tables 3.1.1 and 3.1.2):

- Males (63%)
- Queenslanders aged under 40 years (75% 18-24 year olds, 68% 25-39 year olds)
- Those responsible for a child or young person aged between 0-17 years (64%)
- Queenslanders who do not identify as Aboriginal and/or Torres Strait Islander (61%).

No significant differences by region were evident.

Table 3.1.1: Overall confidence and trust in the Queensland child protection system by gender, age, responsibility for children and Aboriginal and/or Torres Strait Islander status (2022)

Q10(I) Column %	Total 2022 n = 1996	GENDER			AGE (years)				RESPONSIBLE FOR CHILD 0-17 YRS		ABORIGINAL AND/OR TORRES STRAIT ISLANDER	
		Male n = 949	Female n = 1043	Non- binary n = 4^	18-24 years n = 239	25-39 years n = 689	40-59 years n = 486	60+ years n = 582	Yes n = 725	No n = 1262	No n = 1803	Yes n = 193
% of respondents												
Strongly disagree	10	10	11		6 ↓	8 ↓	12	14 ↑	11	10	10 ↓	16 ↑
Disagree	30	26 ↓	33 ↑	50	19 ↓	25 ↓	32	39 ↑	26 ↓	32 ↑	30	34
SUB-TOTAL DISAGREE	40	37 ↓	44 ↑	50	25 ↓	32 ↓	44	54 ↑	36 ↓	43 ↑	39 ↓	50 ↑
Agree	51	53	49	50	64 ↑	58 ↑	45 ↓	42 ↓	51	51	52 ↑	38 ↓
Strongly agree	9	10 ↑	7 ↓		11	10	11	5 ↓	13 ↑	7 ↓	8	12
SUB-TOTAL AGREE	60	63 ↑	56 ↓	50	75 ↑	68 ↑	56	46 ↓	64 ↑	57 ↓	61 ↑	50 ↓

Blue↑/Red↓ figures and arrows indicate the result is significantly higher/lower than the average at at least the 95% confidence level

Base: All respondents electing/able to answer

[^] Caution small cell size

Table 3.1.2: Overall confidence and trust in the Queensland child protection system by region (2022)

Q10(I) Column %	Total 2022 n = 1996	REGION			
		South East n = 1005	Northern n = 395	Southern n = 392	Central n = 204
% of respondents					
Strongly disagree	10	9	10	14	12
Disagree	30	29	34	28	32
SUB-TOTAL DISAGREE	40	38	44	41	45
Agree	51	52	48	53	47
Strongly agree	9	10	9	6	9
SUB-TOTAL AGREE	60	62	56	59	55

Base: All respondents electing/able to answer

3.2 Which organisations or individuals would a concern about child safety be reported to?

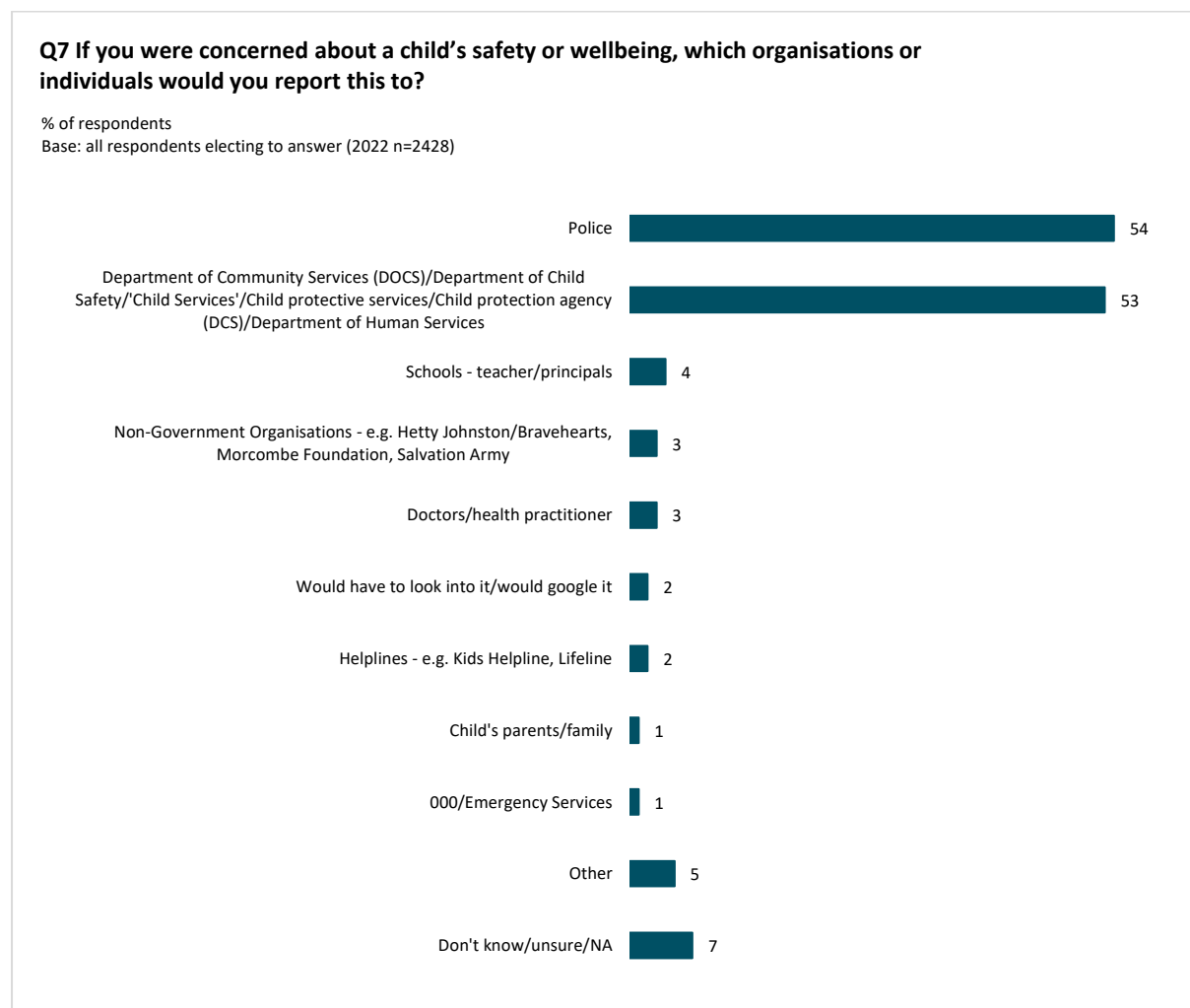
Q7. If you were concerned about a child's safety or wellbeing, which organisations or individuals would you report this to?

3.2.1 2022 results

Respondents were asked which organisations or individuals they would report a child safety concern to. Respondents were able to answer in their own words and post-enumeration responses were coded into key themes.

In the 2022 survey, respondents were most likely to indicate they would report a concern about a child's safety or wellbeing to police (54%). A similar proportion of respondents were likely to indicate they would report a concern to a government agency such as Department of Community Services, Department of Child Safety and Department of Human Services (53%). All other mentions were made by 4% or fewer respondents (see Figure 3.2.1. below).

Figure 3.2.1: Reporting concerns (2022)



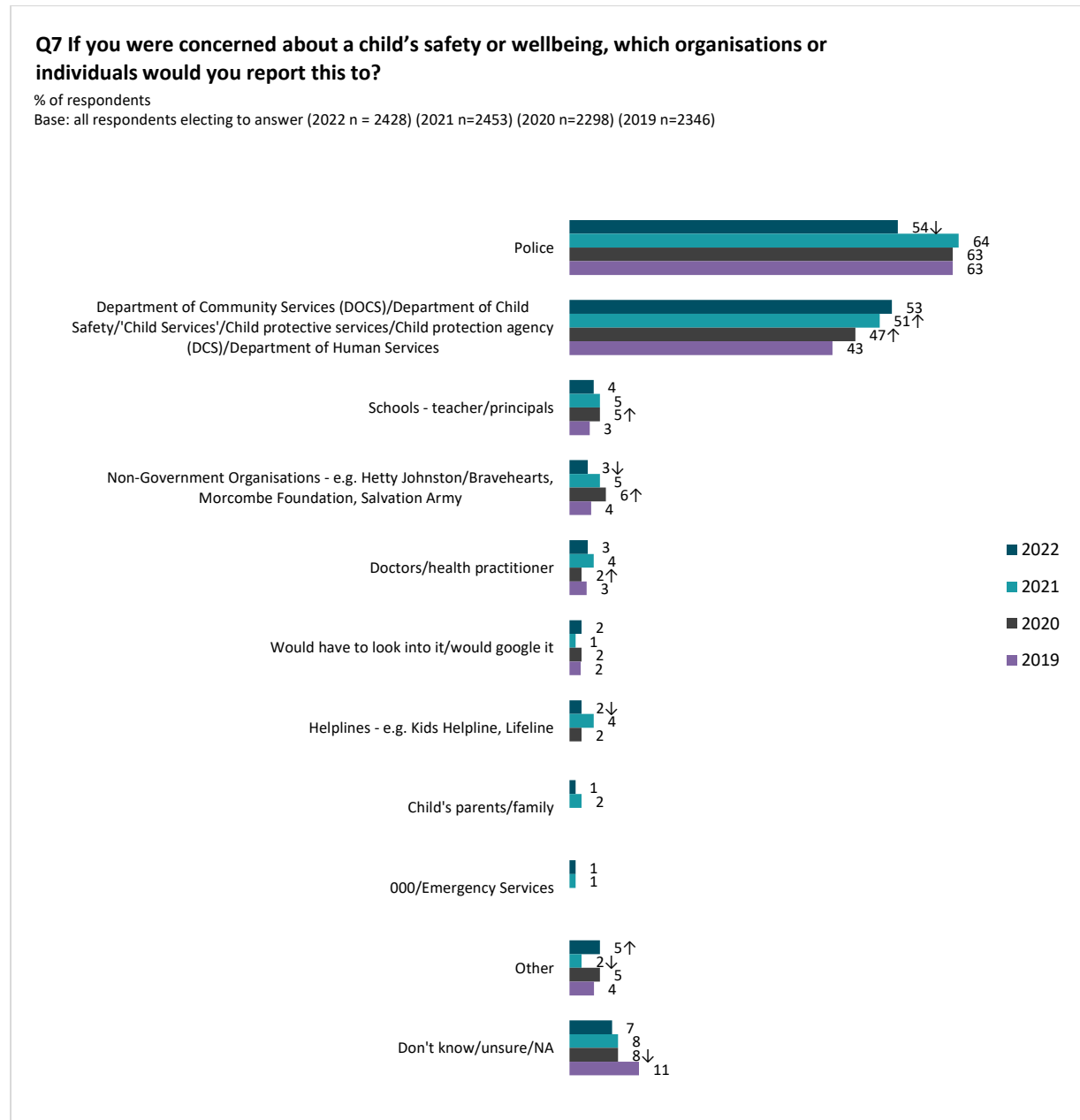
81 respondents elected not to answer this question

3.2.2 Comparison to previous survey data

In the 2022 survey, there was a significant decrease in proportion of respondents who indicated they would report a concern to the police (54%) compared to prior years (63% in 2019, 63% in 2020, and 64% in 2021).

Since 2019 there has been a consistent increase in the proportion of respondents who would report a concern to a relevant government agency (e.g. Department of Child Safety) (43% in 2019, 47% in 2020, 51% in 2021, 53% in 2022).

Figure 3.2.2: Reporting concerns 2019-2022 trend



81 (2022), 67 (2021), 232 (2020) and 157 (2019) respondents elected not to answer this question

↑ ↓ indicates the result is a significant increase or decrease from the prior year result

3.2.3 Sub-group differences (2022)

Responses to the question as to where respondents would report a child safety concern to were analysed by key sub-groups (see Tables 3.2.1 and 3.2.2).

Population segments that were more likely than average (53%) to report a concern to a relevant government department were:

- Females (62%)
- Those aged 25-39 years old (60%)
- Those who have responsibility for a child aged 0-17 years (60%)
- Those who identify as Aboriginal and/or Torres Strait Islander (65%).

Sub-groups more likely than average (54%) to indicate they would report concerns to police were:

- Those aged 60 years or older (64%)
- Those who do not have responsibility for a child (58%).

Other key sub-group differences included:

- Respondents identifying as Aboriginal and/or Torres Strait Islander were more likely than average to indicate they would report concerns of a child's safety or welfare to a non-government organisation (8%, 2% average), a school representative (8%, 4% average) or a doctor or health practitioner (7%, 3% average)
- Females were more likely than males to indicate they would report concerns to a doctor or health practitioner (5% females, 2% males)
- Northern Queensland residents were more likely than average to report concerns to the school or principal (8%, 4% average) or to a non-government organisation (5%, 3% average).

Table 3.2.1: Reporting concerns by gender, age, responsibility for children and Aboriginal and/or Torres Strait Islander status (2022)

Q7 Column %	Total 2022 n = 2428	GENDER			AGE (years)				RESPONSIBLE FOR CHILD 0-17 YRS		ABORIGINAL AND/OR TORRES STRAIT ISLANDER	
		Male n = 1166	Female n = 1256	Non- binary n = 6^	18-24 years n = 277	25-39 years n = 806	40-59 years n = 585	60+ years n = 760	Yes n = 839	No n = 1579	No n = 2210	Yes n = 218
% of respondents												
Police	54	57	52	67	49	47 ↓	55	64 ↑	48 ↓	58 ↑	55	51
Department of Community Services (DOCS)/Department of Child Safety/'Child Services'/Child protective services/Child protection agency (DCS)/Department of Human Services	53	44 ↓	62 ↑	50	57	60 ↑	55	42 ↓	60 ↑	49 ↓	52 ↓	65 ↑
Schools - teacher/principals	4	3 ↓	5 ↑	17	5	5	5	3 ↓	6 ↑	3 ↓	4 ↓	8 ↑
Non-Government Organisations - e.g. Hetty Johnson/ Bravehearts, Morcombe Foundation, Salvation Army	3	3	2		4	2	3	2	4	2	2 ↓	8 ↑
Doctors/Health practitioner	3	2 ↓	5 ↑		3	3	4	4	4	3	3 ↓	7 ↑

Blue↑/Red↓ figures and arrows indicate the result is significantly higher/lower than the average at at least the 95% confidence level

Base: those electing to answer (81 did not answer)

^ Caution small cell size

Table 3.2.1: Reporting concerns by gender, age, responsibility for children and Aboriginal and/or Torres Strait Islander status (2022)
(continued)

Q7 Column %	Total 2022 n = 2428	GENDER			AGE (years)				RESPONSIBLE FOR CHILD 0-17 YRS		ABORIGINAL AND/OR TORRES STRAIT ISLANDER	
		Male n = 1166	Female n = 1256	Non- binary n = 6^	18-24 years n = 277	25-39 years n = 806	40-59 years n = 585	60+ years n = 760	Yes n = 839	No n = 1579	No n = 2210	Yes n = 218

% of respondents

Would have to look into it/would google it	2	2	2		1	4 ↑	2	2	2	2	2	1
Helplines - e.g. Kids Helpline, Lifeline	2	3	2		5 ↑	2	3	2	3	2	2	3
Child's parents/family	1	1	1		3	1	1	1	2	1	1	2
000/Emergency Services	1	1	1		1	1	1	1	2	1	1	0
Other	5	5	5		7	6	5	3	6	4	5	7
Don't know/unsure/NA	7	8	6		7	7	7	8	6	7	7	5

Blue↑/Red↓ figures and arrows indicate the result is significantly higher/lower than the average at at least the 95% confidence level

Base: those electing to answer (81 did not answer)

^ Caution small cell size

Table 3.2.2: Reporting concerns by region (2022)

Q7 Column %	Total 2022 n = 2428	REGION			
		South East n = 1225	Northern n = 485	Southern n = 476	Central n = 242

Police	54	53	59	54	55
Department of Community Services (DOCS)/Department of Child Safety/'Child Services'/Child protective services/Child protection agency (DCS)/Department of Human Services	53	52	57	53	51
Schools - teacher/principals	4	3 ↓	8 ↑	5	4
Non-Government Organisations - e.g. Hetty Johnson/Bravehearts, Morcombe Foundation, Salvation Army	3	2	5 ↑	2	2
Doctors/Health practitioner	3	3	4	3	4
Would have to look into it/would google it	2	2	2	3	2
Helplines - e.g. Kids Helpline, Lifeline	2	2	2	3	2
Child's parents/family	1	1	2	1	2
000/Emergency Services	1	1	2	0	1
Other	5	5	5	6	5
Don't know/unsure/NA	7	8	3 ↓	8	7

Blue↑/Red↓ figures and arrows indicate the result is significantly higher/lower than the average at at least the 95% confidence level

Base: those electing to answer (81 did not answer)

3.3 Protections and supports for children and young people

Q51 In my community, children and young people... (Respondents were asked how strongly they agreed with a range of statements)

New question in 2022.

3.3.1 2022 result

Respondents were asked about the extent to which they agreed or disagreed with a range of statements about their community and the extent to which children and young people had appropriate access to safety, support and wellbeing mechanisms.

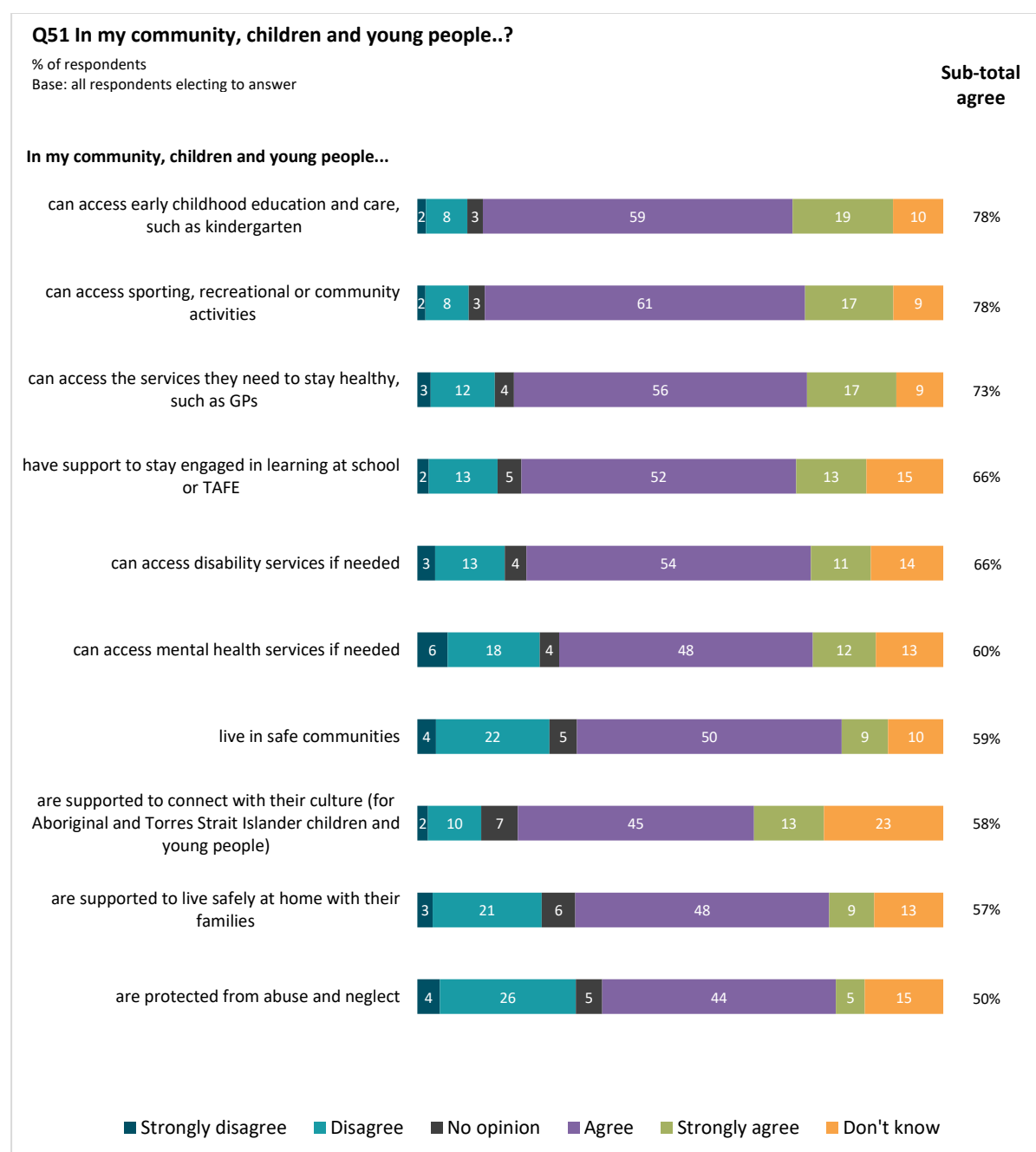
Across the statements, the highest level of agreement (agree/strongly agree) by respondents regarding their communities was that children and young people were able to access early childhood education and care (78% agree/strongly agree), they could access sporting, recreational or community activities (78%) or that they could access services to stay healthy, such as GPs (73%).

66% of respondents agreed children and young people have support to stay engaged in learning at school or TAFE, or that they can access disability (66%) or mental health (60%) services if needed.

59% of respondents agreed children and young people live in safe communities, while 50% agreed that in their community, children and young people are protected from abuse and neglect. Furthermore, on the issue of safety, 57% of respondents agreed that children are supported to live safely at home with their families and 59% agreed that their children and young people live in safe communities.

See Figure 3.3.1 over page.

Figure 3.3.1: Agreement with statements about protections and supports for children and young people (2022)



Respondents who declined to answer the question have been removed from the base when reporting results. The base is therefore different for each of the above statements. The smallest base was n=2504 (when 5 respondents declined to answer) for the item 'Can access the services they need to stay healthy, such as GPs'. The reader is referred to Table 3.3.1 for a description of the base for each statement.

3.3.2 Sub-group differences (2022)

The results were analysed by key sub-groups (see Tables 3.3.1 and 3.3.2). This commentary focuses on statistical differences evident in the proportion of overall agreement (agree/strongly agree) against the average.

Males were more likely than the average to agree that in their community, children and young people can access disability services (68%, 66% average) or mental health services (64%, 60% average). Males were also more likely than average to agree that children and young people live in safe communities (65%, 59% average), are supported to live safely at home with their families (62%, 57% average) or are protected from abuse and neglect (55%, 50% average).

Respondents aged under 40 years old were more likely than average to agree that children and young people in their community have support to stay engaged in learning (73% 18-24 years old, 69% 25-39 years old, 66% average), are supported to connect with their culture (67% 18-24 years old, 63% 25-39 years old, 58% average), are supported to live safely at home (65% 18-24 years old, 65% 25-39 years old, 57% average) or are protected from abuse and neglect (59% 18-24 years old, 56% 25-39 years old, 50% average). Additionally, those aged 25-39 years were more likely than the average to agree/strongly agree that children and young people can access disability services in their community (69%, 66% average) or live in safe communities (64%, 59% average).

Those who are responsible for children aged 0-17 years were significantly more likely to agree/strongly agree with all of the statements about children and young people's access, safety and wellbeing within their community compared to the average.

Respondents who identify as Aboriginal and/or Torres Strait Islander were more likely than average to agree that children and young people within their community are supported to connect with their culture (69%, 58% average).

Respondents living in South East Queensland were significantly more likely than the average to agree that in their community, children and young people can access early education and care (80%, 78% average) or services to stay healthy (77%, 73% average). They were also more likely to agree that children are supported to engage in learning (69%, 66% average), live in safe communities (64%, 59% average), are supported to live safely at home with their families (62%, 57% average) or are protected from abuse and neglect (54%, 50% average).

Residents in Northern and Central Queensland who responded to the survey were more likely than the average to agree that in their communities, children and young people are supported to connect with their culture (66% Northern, 66% Central, 58% average).

Other key sub-group differences are outlined in Tables 3.3.1 and 3.3.2 following.

Table 3.3.1: Agreement with statements about protections and supports for children and young people by gender, age, responsibility for children and Aboriginal and/or Torres Strait Islander status (2022)

Q51 Column %	Total 2022	GENDER			AGE (years)				RESPONSIBLE FOR CHILD 0-17 YRS		ABORIGINAL AND/OR TORRES STRAIT ISLANDER	
% of respondents												
Can access early childhood education and care, such as kindergarten												
	Total 2022 n = 2504	Male n = 1199	Female n = 1299	Non- binary n = 6^	18-24 years n = 292	25-39 years n = 836	40-59 years n = 604	60+ years n = 772	Yes n = 859	No n = 1634	No n = 2281	Yes n = 223
Strongly disagree	2	2	2		1	2	1	1	2	2	2	2
Disagree	8	7	9		10	9	7	6	10	7	8	10
SUB-TOTAL DISAGREE	10	9	10		12	11	9	8	11	9	9	12
No opinion	3	4	2	17	2	3	4	3	2	3	3	2
Agree	59	57	60	67	57	60	58	59	59	59	58	63
Strongly agree	19	21	18	17	22	19	19	18	22 ↑	18 ↓	19	20
SUB-TOTAL AGREE	78	78	78	83	79	80	77	77	82 ↑	76 ↓	77	83
Don't know	10	10	9		7	6 ↓	11	13 ↑	5 ↓	12 ↑	10 ↑	2 ↓
Can access sporting, recreational or community activities												
	Total 2022 n = 2506	Male n = 1198	Female n = 1302	Non- binary n = 6^	18-24 years n = 293	25-39 years n = 835	40-59 years n = 605	60+ years n = 773	Yes n = 859	No n = 1636	No n = 2282	Yes n = 224
Strongly disagree	2	1	2		2	1	2	1	2	1	1 ↓	4 ↑
Disagree	8	7	9		11	10 ↑	9	5 ↓	10	7	8 ↓	13 ↑
SUB-TOTAL DISAGREE	10	9	11		13	11	11	6 ↓	11	9	9 ↓	17 ↑
No opinion	3	3	3	17	2	2	3	4	2	4	3	2
Agree	61	60	62	67	60	64 ↑	60	59	64	59	61	58
Strongly agree	17	20 ↑	14 ↓	17	17	15	16	18	18	16	17	18
SUB-TOTAL AGREE	78	79	76	83	77	80	76	77	81 ↑	76 ↓	78	76
Don't know	9	9	10		8	7 ↓	10	13 ↑	5 ↓	12 ↑	10	5

Blue↑/Red↓ figures and arrows indicate the result is significantly higher/lower than the average at at least the 95% confidence level

Base: All respondents electing to answer

^ Caution small cell size

Table 3.3.1: Agreement with statements about protections and supports for children and young people by gender, age, responsibility for children and Aboriginal and/or Torres Strait Islander status (2022) (continued)

Q51 Column %	Total 2022	GENDER			AGE (years)				RESPONSIBLE FOR CHILD 0-17 YRS		ABORIGINAL AND/OR TORRES STRAIT ISLANDER	
% of respondents												
Can access the services they need to stay healthy, such as GPs												
	Total 2022 n = 2504	Male n = 1199	Female n = 1299	Non- binary n = 6^	18-24 years n = 293	25-39 years n = 835	40-59 years n = 603	60+ years n = 773	Yes n = 859	No n = 1634	No n = 2280	Yes n = 224
Strongly disagree	3	2	3		2	3	3	2	3	2	2	4
Disagree	12	10 ↓	14 ↑		14	14	13	8 ↓	14	11	12	15
SUB-TOTAL DISAGREE	15	12 ↓	17 ↑		16	17 ↑	17	10 ↓	17 ↑	13 ↓	14	18
No opinion	4	4	3	33	2	3	3	5	2 ↓	4 ↑	4	2
Agree	56	56	56	50	55	57	56	55	58	55	56	55
Strongly agree	17	19	15	17	21	17	14	17	19	16	17	21
SUB-TOTAL AGREE	73	75	71	67	76	74	70	72	76 ↑	71 ↓	72	76
Don't know	9	9	9		6	5 ↓	10	13 ↑	4 ↓	11 ↑	9 ↑	4 ↓
Have support to stay engaged in learning at school or TAFE												
	Total 2022 n = 2509	Male n = 1201	Female n = 1302	Non- binary n = 6^	18-24 years n = 293	25-39 years n = 836	40-59 years n = 605	60+ years n = 775	Yes n = 860	No n = 1638	No n = 2285	Yes n = 224
Strongly disagree	2	2	3		2	2	3	2	2	2	2 ↓	4 ↑
Disagree	13	12	15		13	15	14	10 ↓	14	13	13 ↓	19 ↑
SUB-TOTAL DISAGREE	15	13 ↓	17 ↑		16	17	17	12 ↓	16	15	14 ↓	24 ↑
No opinion	5	4	4	33	3	4	4	5	4	5	5	2
Agree	52	52	52	50	57	57 ↑	51	47 ↓	57 ↑	50 ↓	52	50
Strongly agree	13	15	12	17	16	12	14	13	15	13	13	17
SUB-TOTAL AGREE	66	67	64	67	73 ↑	69 ↑	64	60 ↓	72 ↑	63 ↓	65	67
Don't know	15	15	14		9 ↓	9 ↓	14	23 ↑	9 ↓	18 ↑	15 ↑	7 ↓
Can access disability services if needed												
	Total 2022 n = 2505	Male n = 1199	Female n = 1300	Non- binary n = 6^	18-24 years n = 293	25-39 years n = 834	40-59 years n = 603	60+ years n = 775	Yes n = 859	No n = 1635	No n = 2282	Yes n = 223
Strongly disagree	3	3	4		3	4	3	3	3	3	3	4
Disagree	13	11 ↓	15 ↑	17	15	13	15	11	15	13	12 ↓	23 ↑
SUB-TOTAL DISAGREE	17	14 ↓	19 ↑	17	18	17	18	14	18	16	16 ↓	28 ↑
No opinion	4	4	4	17	5	3	4	4	4	4	4	3
Agree	54	56	52	67	53	58 ↑	51	53	55	54	55	48
Strongly agree	11	12	11		15	11	11	10	14 ↑	10 ↓	11	16
SUB-TOTAL AGREE	66	68 ↑	63 ↓	67	68	69 ↑	63	63	69 ↑	64 ↓	66	64
Don't know	14	14	14		10	10 ↓	15	18 ↑	9 ↓	16 ↑	15 ↑	6 ↓

Blue↑/Red↓ figures and arrows indicate the result is significantly higher/lower than the average at at least the 95% confidence level

Base: All respondents electing to answer

^ Caution small cell size

Table 3.3.1: Agreement with statements about protections and supports for children and young people by gender, age, responsibility for children and Aboriginal and/or Torres Strait Islander status (2022) (continued)

Q51 Column %	Total 2022	GENDER			AGE (years)				RESPONSIBLE FOR CHILD 0-17 YRS		ABORIGINAL AND/OR TORRES STRAIT ISLANDER	
% of respondents												
Can access mental health services if needed												
	Total 2022 n = 2505	Male n = 1199	Female n = 1300	Non- binary n = 6^	18-24 years n = 293	25-39 years n = 836	40-59 years n = 605	60+ years n = 771	Yes n = 859	No n = 1635	No n = 2281	Yes n = 224
Strongly disagree	6%	5%	7%		3%	8% ↑	7%	4% ↓	7%	5%	6%	6%
Disagree	18%	14% ↓	21% ↑		23%	19%	19%	13% ↓	20%	16%	17% ↓	25% ↑
SUB-TOTAL DISAGREE	23%	18% ↓	28% ↑		26%	26% ↑	25%	17% ↓	26% ↑	22% ↓	23% ↓	31% ↑
No opinion	4%	4%	3%	17%	4%	4%	3%	4%	3%	4%	4%	2%
Agree	48%	51%	46%	50%	45%	50%	48%	48%	49%	48%	49%	45%
Strongly agree	12%	13%	11%	17%	16%	12%	12%	10%	15% ↑	10% ↓	11% ↓	18% ↑
SUB-TOTAL AGREE	60%	64% ↑	57% ↓	67%	61%	62%	60%	58%	64% ↑	58% ↓	60%	63%
Don't know	13%	14%	12%	17%	9%	8% ↓	12%	21% ↑	7% ↓	16% ↑	14% ↑	4% ↓
Live in safe communities												
	Total 2022 n = 2506	Male n = 1200	Female n = 1300	Non- binary n = 6^	18-24 years n = 293	25-39 years n = 836	40-59 years n = 604	60+ years n = 773	Yes n = 860	No n = 1635	No n = 2282	Yes n = 224
Strongly disagree	4%	3%	4%	17%	2%	4%	5%	2%	4%	3%	4%	4%
Disagree	22%	18% ↓	25% ↑		22%	22%	24%	20%	23%	21%	20% ↓	33% ↑
SUB-TOTAL DISAGREE	25%	21% ↓	29% ↑	17%	24%	25%	29%	22%	27%	24%	24% ↓	37% ↑
No opinion	5%	5%	5%	50%	5%	4%	5%	6%	4% ↓	6% ↑	5%	4%
Agree	50%	54% ↑	47% ↓	17%	48%	55% ↑	48%	49%	53%	49%	51% ↑	42% ↓
Strongly agree	9%	11% ↑	7% ↓		13% ↑	9%	8%	8%	11% ↑	8% ↓	8% ↓	13% ↑
SUB-TOTAL AGREE	59%	65% ↑	54% ↓	17%	61%	64% ↑	56%	56%	63% ↑	57% ↓	60%	55%
Don't know	10%	9%	12%	17%	9%	7% ↓	10%	16% ↑	6% ↓	13% ↑	11% ↑	4% ↓
Are supported to connect with their culture (for Aboriginal and Torres Strait Islander children and young people)												
	Total 2022 n = 2507	Male n = 1201	Female n = 1300	Non- binary n = 6^	18-24 years n = 293	25-39 years n = 835	40-59 years n = 604	60+ years n = 775	Yes n = 859	No n = 1637	No n = 2283	Yes n = 224
Strongly disagree	2%	2%	2%		2%	2%	3%	2%	2%	2%	2% ↓	4% ↑
Disagree	10%	9%	11%		14% ↑	12% ↑	9%	7% ↓	11%	10%	10% ↓	16% ↑
SUB-TOTAL DISAGREE	12%	11%	13%		16%	14%	11%	9% ↓	12%	12%	11% ↓	21% ↑
No opinion	7%	8%	6%	17%	3% ↓	6%	6%	10% ↑	5% ↓	8% ↑	7% ↑	3% ↓
Agree	45%	45%	45%	67%	50%	49% ↑	44%	38% ↓	50% ↑	42% ↓	45%	47%
Strongly agree	13%	14%	13%	17%	17%	14%	15%	10% ↓	16% ↑	12% ↓	13% ↓	21% ↑
SUB-TOTAL AGREE	58%	58%	58%	83%	67% ↑	63% ↑	60%	49% ↓	66% ↑	54% ↓	57% ↓	69% ↑
Don't know	23%	22%	23%		14% ↓	16% ↓	23%	33% ↑	16% ↓	26% ↑	24% ↑	8% ↓

Blue↑/Red↓ figures and arrows indicate the result is significantly higher/lower than the average at at least the 95% confidence level

Base: All respondents electing to answer

^ Caution small cell size

Table 3.3.1: Agreement with statements about protections and supports for children and young people by gender, age, responsibility for children and Aboriginal and/or Torres Strait Islander status (2022) (continued)

Q51 Column %	Total 2022	GENDER			AGE (years)				RESPONSIBLE FOR CHILD 0-17 YRS		ABORIGINAL AND/OR TORRES STRAIT ISLANDER	
% of respondents												
Are supported to live safely at home with their families												
	Total 2022 n = 2506	Male n = 1200	Female n = 1300	Non- binary n = 6^	18-24 years n = 293	25-39 years n = 835	40-59 years n = 604	60+ years n = 774	Yes n = 858	No n = 1637	No n = 2283	Yes n = 223
Strongly disagree	3%	2%	3%		2%	2%	5% ↑	2%	4%	3%	3%	5%
Disagree	21%	16% ↓	25% ↑	50%	22%	20%	22%	21%	21%	21%	20% ↓	32% ↑
SUB-TOTAL DISAGREE	24%	19% ↓	28% ↑	50%	24%	22%	26%	23%	24%	23%	22% ↓	38% ↑
No opinion	6%	7%	6%	50%	4%	5% ↓	7%	9% ↑	5% ↓	7% ↑	6%	6%
Agree	48%	52% ↑	45% ↓		55% ↑	56% ↑	44%	41% ↓	53% ↑	46% ↓	49% ↑	39% ↓
Strongly agree	9%	10% ↑	7% ↓		10%	9%	10%	7%	11% ↑	7% ↓	8%	13%
SUB-TOTAL AGREE	57%	62% ↑	52% ↓		65% ↑	65% ↑	54%	47% ↓	64% ↑	53% ↓	57%	51%
Don't know	13%	12%	14%		6% ↓	9% ↓	12%	21% ↑	7% ↓	16% ↑	14% ↑	5% ↓
Are protected from abuse and neglect												
	Total 2022 n = 2508	Male n = 1200	Female n = 1302	Non- binary n = 6^	18-24 years n = 293	25-39 years n = 836	40-59 years n = 605	60+ years n = 774	Yes n = 860	No n = 1637	No n = 2284	Yes n = 224
Strongly disagree	4%	4%	5%		4%	4%	6% ↑	3%	5%	4%	4% ↓	9% ↑
Disagree	26%	22% ↓	30% ↑	33%	25%	25%	25%	27%	27%	25%	25% ↓	36% ↑
SUB-TOTAL DISAGREE	30%	26% ↓	34% ↑	33%	29%	29%	32%	30%	32%	29%	29% ↓	45% ↑
No opinion	5%	6%	4%	17%	2% ↓	4%	5%	7% ↑	4%	6%	5%	3%
Agree	44%	49% ↑	41% ↓	33%	52% ↑	50% ↑	43%	36% ↓	48% ↑	43% ↓	45% ↑	36% ↓
Strongly agree	5%	6%	5%		7%	6%	6%	4% ↓	8% ↑	4% ↓	5% ↓	10% ↑
SUB-TOTAL AGREE	50%	55% ↑	46% ↓	33%	59% ↑	56% ↑	49%	40% ↓	55% ↑	47% ↓	50%	46%
Don't know	15%	14%	16%	17%	10%	10% ↓	14%	23% ↑	9% ↓	18% ↑	16% ↑	6% ↓

Blue↑/Red↓ figures and arrows indicate the result is significantly higher/lower than the average at at least the 95% confidence level

Base: All respondents electing to answer

[^] Caution small cell size

Table 3.3.2: Agreement with statements about protections and supports for children and young people by region (2022)

Q51 Column %	Total 2022	REGION			
% of respondents					
Can access early childhood education and care, such as kindergarten					
	Total 2022 n = 2504	South East n = 1253	Northern n = 502	Southern n = 500	Central n = 249
Strongly disagree	2	1 ↓	2	2	4 ↑
Disagree	8	7	9	7	12 ↑
SUB-TOTAL DISAGREE	10	8	11	8	16 ↑
No opinion	3	3	2	4	2
Agree	59	58	61	57	60
Strongly agree	19	22 ↑	17	18	12 ↓
SUB-TOTAL AGREE	78	80 ↑	78	75	72
Don't know	10	9	9	12	10
Can access sporting, recreational or community activities					
	Total 2022 n = 2506	South East n = 1254	Northern n = 501	Southern n = 501	Central n = 250
Strongly disagree	2	1 ↓	3	2	2
Disagree	8	8	9	9	8
SUB-TOTAL DISAGREE	10	9	11	11	10
No opinion	3	3	3	5	1
Agree	61	61	62	55 ↓	70 ↑
Strongly agree	17	19 ↑	14	16	12
SUB-TOTAL AGREE	78	80	76	71 ↓	83
Don't know	9	9	9	13 ↑	6
Can access the services they need to stay healthy, such as GPs					
	Total 2022 n = 2504	South East n = 1252	Northern n = 502	Southern n = 501	Central n = 249
Strongly disagree	3	2 ↓	4	3	4
Disagree	12	10 ↓	17 ↑	11	16
SUB-TOTAL DISAGREE	15	11 ↓	20 ↑	14	21 ↑
No opinion	4	3	3	5	3
Agree	56	56	55	54	58
Strongly agree	17	21 ↑	12 ↓	16	10 ↓
SUB-TOTAL AGREE	73	77 ↑	67 ↓	70	68
Don't know	9	8	10	11	8
Have support to stay engaged in learning at school or TAFE					
	Total 2022 n = 2509	South East n = 1254	Northern n = 503	Southern n = 502	Central n = 250
Strongly disagree	2	1 ↓	3	2	4
Disagree	13	11 ↓	16	14	18
SUB-TOTAL DISAGREE	15	12 ↓	19 ↑	16	22 ↑
No opinion	5	5	4	5	4
Agree	52	53	53	50	54
Strongly agree	13	16 ↑	11	12	9
SUB-TOTAL AGREE	66	69 ↑	64	62	63
Don't know	15	15	13	17	11

Blue↑/Red↓ figures and arrows indicate the result is significantly higher/lower than the average at at least the 95% confidence level
Base: All respondents electing to answer

Table 3.3.2: Agreement with statements about protections and supports for children and young people by region (2022) (continued)

Q51 Column %	Total 2022	REGION			
% of respondents					
Can access disability services if needed					
	Total 2022 n = 2505	South East n = 1254	Northern n = 502	Southern n = 499	Central n = 250
Strongly disagree	3	3	4	4	5
Disagree	13	12	17 ↑	12	16
SUB-TOTAL DISAGREE	17	14 ↓	21 ↑	16	21
No opinion	4	4	3	6	2
Agree	54	55	54	49	60
Strongly agree	11	13	9	13	6 ↓
SUB-TOTAL AGREE	66	68	63	62	66
Don't know	14	14	13	16	11
Can access mental health services if needed					
	Total 2022 n = 2505	South East n = 1253	Northern n = 503	Southern n = 500	Central n = 249
Strongly disagree	6	4 ↓	7	7	6
Disagree	18	17	18	17	23
SUB-TOTAL DISAGREE	23	21 ↓	25	24	29
No opinion	4	3	4	5	2
Agree	48	49	50	43 ↓	53
Strongly agree	12	14 ↑	10	12	6 ↓
SUB-TOTAL AGREE	60	62	60	55 ↓	60
Don't know	13	13	11	16	9
Live in safe communities					
	Total 2022 n = 2506	South East n = 1252	Northern n = 503	Southern n = 502	Central n = 249
Strongly disagree	4	2 ↓	7 ↑	4	6
Disagree	22	18 ↓	31 ↑	21	22
SUB-TOTAL DISAGREE	25	20 ↓	37 ↑	25	28
No opinion	5	6	5	5	6
Agree	50	54 ↑	43 ↓	49	49
Strongly agree	9	10 ↑	7	8	6
SUB-TOTAL AGREE	59	64 ↑	50 ↓	58	56
Don't know	10	10	9	13	10
Are supported to connect with their culture (for Aboriginal and Torres Strait Islander children and young people)					
	Total 2022 n = 2507	South East n = 1253	Northern n = 503	Southern n = 501	Central n = 250
Strongly disagree	2	2	3	1	2
Disagree	10	11	10	8	10
SUB-TOTAL DISAGREE	12	13	13	10	12
No opinion	7	7	5	10 ↑	5
Agree	45	42	49	43	53 ↑
Strongly agree	13	12	17 ↑	12	13
SUB-TOTAL AGREE	58	55 ↓	66 ↑	55	66 ↑
Don't know	23	25 ↑	16 ↓	26	16

Blue↑/Red↓ figures and arrows indicate the result is significantly higher/lower than the average at at least the 95% confidence level
 Base: All respondents electing to answer

Table 3.3.2: Agreement with statements about protections and supports for children and young people by region (2022) (continued)

Q51 Column %	Total 2022	REGION			
% of respondents					
Are supported to live safely at home with their families					
	Total 2022 n = 2506	South East n = 1252	Northern n = 502	Southern n = 502	Central n = 250
Strongly disagree	3	2 ↓	4	4	4
Disagree	21	17 ↓	30 ↑	21	22
SUB-TOTAL DISAGREE	24	19 ↓	34 ↑	24	27
No opinion	6	6	6	8	4
Agree	48	51 ↑	41 ↓	44	55
Strongly agree	9	11 ↑	7	6	4 ↓
SUB-TOTAL AGREE	57	62 ↑	48 ↓	50 ↓	59
Don't know	13	13	12	17 ↑	10
Are protected from abuse and neglect					
	Total 2022 n = 2508	South East n = 1253	Northern n = 503	Southern n = 502	Central n = 250
Strongly disagree	4	2 ↓	7 ↑	5	8 ↑
Disagree	26	24 ↓	33 ↑	24	27
SUB-TOTAL DISAGREE	30	26 ↓	40 ↑	28	35
No opinion	5	4	6	7	4
Agree	44	48 ↑	38 ↓	41	47
Strongly agree	5	6	5	6	2 ↓
SUB-TOTAL AGREE	50	54 ↑	43 ↓	47	49
Don't know	15	16	11 ↓	18	12

Blue↑/Red↓ figures and arrows indicate the result is significantly higher/lower than the average at at least the 95% confidence level

Base: All respondents electing to answer

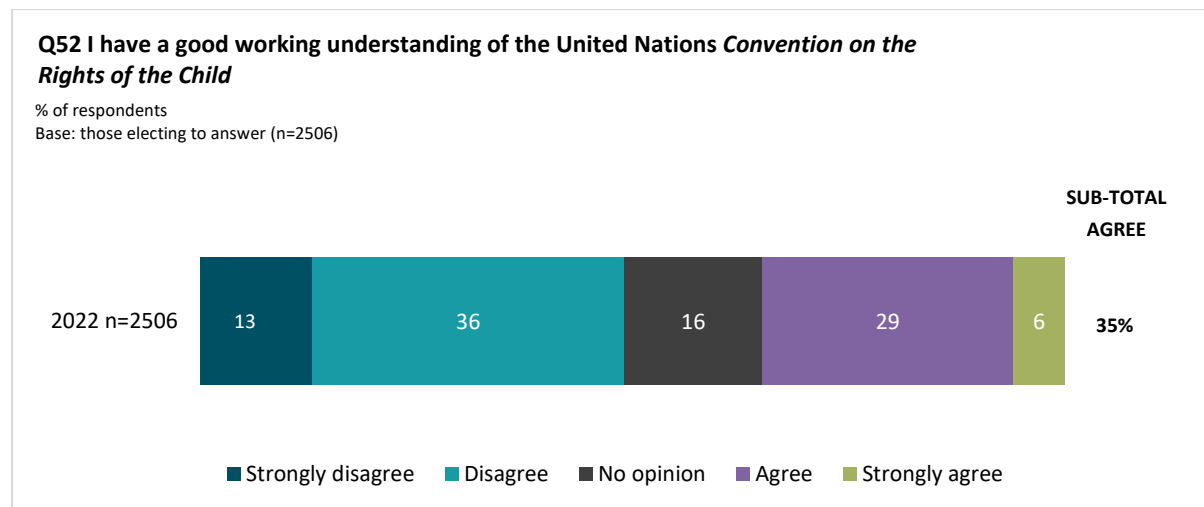
3.4 Understanding of Convention on the Rights of the Child

Q52 I have a good understanding of the United Nations Convention on the Rights of the Child
New question in 2022.

3.4.1 2022 results

In the 2022 survey, 35% of respondents agreed (6% strongly agreed; 29% agreed) that they have a good working understanding of the United Nations *Convention on the Rights of the Child*. Almost half (49%) disagreed that they have a good working understanding of this, while 16% had no opinion on the matter.

Figure 3.4.1: Understanding of Convention on the Rights of the Child (2022)



3 respondents elected not to answer this question

3.4.2 Sub-group differences (2022)

The following sub-groups were more likely than average (35%) to agree overall (agree/strongly agree) that they have a good working understanding of the UN's *Convention on the Rights of the Child* (see Tables 3.4.1 and 3.4.2):

- Females (37%)
- Respondents aged under 40 years (43% 18-24 year olds, 42% 25-39 year olds)
- Those responsible for a child aged between 0-17 years (43%)
- Queenslanders who identify as Aboriginal and/or Torres Strait Islander (49%).

Other key sub-group differences are outlined in Tables 3.4.1 and 3.4.2 following.

Table 3.4.1: Understanding of Convention on the Rights of the Child by gender, age, responsibility for children and Aboriginal and/or Torres Strait Islander status (2022)

Q52 Column %	Total 2022 n = 2506	GENDER			AGE (years)				RESPONSIBLE FOR CHILD 0-17 YRS		ABORIGINAL AND/OR TORRES STRAIT ISLANDER	
		Male n = 1199	Female n = 1301	Non- binary n = 6^	18-24 years n = 293	25-39 years n = 834	40-59 years n = 605	60+ years n = 774	Yes n = 858	No n = 1637	No n = 2282	Yes n = 224
% of respondents												
Strongly disagree	13	14	12	17	9 ↓	11	13	16 ↑	10 ↓	15 ↑	13 ↑	8 ↓
Disagree	36	38	34	33	33	33	34	41 ↑	34	37	37 ↑	22 ↓
SUB-TOTAL DISAGREE	49	53 ↑	46 ↓	50	42 ↓	44 ↓	48	57 ↑	44 ↓	52 ↑	51 ↑	30 ↓
No opinion	16	16	17	17	15	13 ↓	18	20 ↑	13 ↓	18 ↑	16	21
Agree	29	27	31	17	36 ↑	35 ↑	28	20 ↓	35 ↑	26 ↓	28 ↓	37 ↑
Strongly agree	6	4 ↓	7 ↑	17	7	7	6	3 ↓	8 ↑	4 ↓	5 ↓	12 ↑
SUB-TOTAL AGREE	35	32 ↓	37 ↑	33	43 ↑	42 ↑	35	23 ↓	43 ↑	30 ↓	33 ↓	49 ↑

Blue↑/Red↓ figures and arrows indicate the result is significantly higher/lower than the average at at least the 95% confidence level

Base: All respondents electing/able to answer

^ Caution small cell size

Table 3.4.2: Understanding of Convention on the Rights of the Child by region (2022)

Q52 Column %	Total 2022 n = 2506	REGION			
		South East n = 1252	Northern n = 502	Southern n = 502	Central n = 250
% of respondents					
Strongly disagree	13	13	12	15	11
Disagree	36	37	30	37	40
SUB-TOTAL DISAGREE	49	50	43 ↓	52	51
No opinion	16	15	18	18	17
Agree	29	29	33	25	28
Strongly agree	6	6	7	4	4
SUB-TOTAL AGREE	35	35	39	29	32

Blue↑/Red↓ figures and arrows indicate the result is significantly higher/lower than the average at at least the 95% confidence level

Base: All respondents electing/able to answer

3.5 Decisions made in the best interest of children and young people

Q53 How much do you agree or disagree that decisions are made in children's and young people's best interests by the following systems?

New question in 2022.

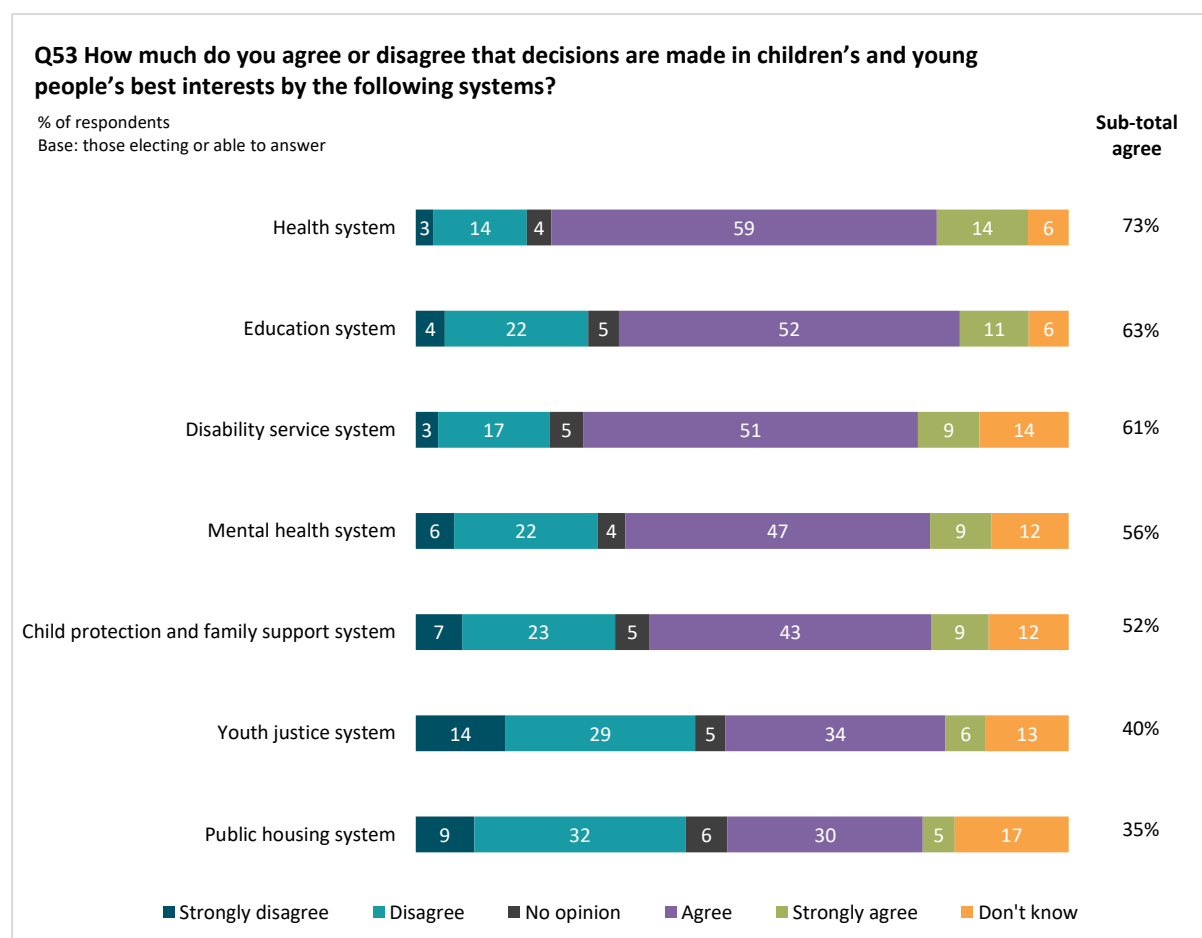
3.5.1 2022 results

Respondents were asked about their level of agreement as to whether various Queensland systems make decisions in the best interest of children and young people.

The majority (73%) of respondents agreed (agree/strongly agree) that the Queensland health system makes decisions in children and young people's best interests with 14% strongly agreeing and 59% agreeing. Approximately 6 in 10 agreed with regard to the education system (63% agree/strongly agree) or the disability service system (61%). 56% of respondents agreed this was also the case for the mental health system while 52% agreed in relation to the child protection and family support system.

Agreement levels were lower with regard to the public housing system where 35% of respondents agreed or strongly agreed that decisions were in the best interest of children and 41% disagreed or strongly disagreed with this assessment. Opinions were also divided regarding the youth justice system where 40% of respondents agreed or strongly agreed that decisions made were in the best interests of children and young people and 43% disagreed (disagree/strongly disagree).

Figure 3.5.1: Agreement with statements about whether the decisions are made in the best interest of children and young people (2022)



Respondents who declined to answer the question have been removed from the base when reporting results. The base is therefore different for each of the above statements. The smallest base was n=2502 (when 7 respondents declined to answer) for the item 'Public housing system'. The reader is referred to Table 3.5.1 for a description of the base for each statement.

3.5.2 Sub-group differences (2022)

Views on the degree to which different systems make decisions in the best interests of children and young people in Queensland were analysed by key sub-groups.

Across the board, respondents responsible for children aged 0-17 years held higher than average agreement (agree/strongly agree) that decisions made by systems are in the best interests of children and young people. Respondents with no responsibility for children were more likely to state they 'did not know'. Respondents who identify as Aboriginal and/or Torres Strait Islander consistently provided higher than average levels of disagreement (disagree/strongly disagree) regarding all systems' decision-making intent.

Male respondents were more likely than average to agree that decisions made by the following systems are in the best interests of children and young people:

- Health system (76%, 73% average)
- Mental health system (59%, 56% average)
- Child protection and family support system (55%, 52% average).

Respondents aged 60 years or older were more likely to provide a 'don't know' response related to the different systems. Respondents aged under 40 years, however, were more likely than average to agree that the following systems make decisions in the best interests of children and young people:

- Disability service system (65% 25-39 year olds, 61% average)
- Child protection and family support system (66% 18-24 year olds, 58% 25-39 year olds, 52% average)
- Youth justice system (56% 18-24 year olds, 44% 25-39 year olds, 40% average)
- Public housing system (44% 18-24 year olds, 39% 25-39 year olds, 35% average).

Residents in South East Queensland provided higher than average agreement ratings that decisions made by the youth justice system are in the best interests of children and young people (43%, 40% average), while those in the Northern region were more likely to disagree (52%). Residents in Southern Queensland were significantly less likely than average to agree that the public housing system decisions were made with similar intent (28%, 35% average).

Other sub-group differences are detailed in Tables 3.5.1 and 3.5.2 following.

Table 3.5.1: Agreement with statements about whether the decisions are made in the best interest of children and young people by gender, age, responsibility for children and Aboriginal and/or Torres Strait Islander status (2022)

Q53 Column %	Total 2022	GENDER				AGE (years)				RESPONSIBLE FOR CHILD 0-17 YRS	ABORIGINAL AND/OR TORRES STRAIT ISLANDER	
% of respondents												
Health system												
	Total 2022 n = 2506	Male n = 1198	Female n = 1302	Non- binary n = 6^	18-24 years n = 293	25-39 years n = 836	40-59 years n = 603	60+ years n = 774	Yes n = 860	No n = 1635	No n = 2282	Yes n = 224
Strongly disagree	3	3	3		2	3	4	2	3	2	3	5
Disagree	14	12 ↓	16 ↑	33	15	16	14	12	15	14	14	20
SUB-TOTAL DISAGREE	17	15 ↓	19	33	17	19	18	14	19	16	16 ↓	25 ↑
No opinion	4	3	4	17	3	3	4	4	3	4	4	3
Agree	59	59	59	50	58	61	59	58	61	58	59	55
Strongly agree	14	17 ↑	11 ↓		17	13	13	15	15	14	14	13
SUB-TOTAL AGREE	73	76 ↑	70 ↓	50	76	74	71	72	76	72	73	68
Don't know	6	6	7		4	4 ↓	6	9 ↑	3 ↓	8 ↑	6	4

Blue↑/Red↓ figures and arrows indicate the result is significantly higher/lower than the average at at least the 95% confidence level

Base: All respondents electing to answer; ^ Caution small cell size

Table 3.5.1: Agreement with statements about whether the decisions are made in the best interest of children and young people by gender, age, responsibility for children and Aboriginal and/or Torres Strait Islander status (2022) (continued)

Q53 Column %	Total 2022	GENDER			AGE (years)				RESPONSIBLE FOR CHILD 0-17 YRS		ABORIGINAL AND/OR TORRES STRAIT ISLANDER	
% of respondents												
Education system												
	Total 2022 n = 2508	Male n = 1200	Female n = 1302	Non- binary n = 6^	18-24 years n = 293	25-39 years n = 836	40-59 years n = 605	60+ years n = 774	Yes n = 860	No n = 1637	No n = 2284	Yes n = 224
Strongly disagree	4	5	4		4	5	5	4	5	4	4 ↓	9 ↑
Disagree	22	22	22	50	21	23	23	21	23	21	21	28
SUB-TOTAL DISAGREE	26	26	26	50	25	27	28	25	28	26	25 ↓	37 ↑
No opinion	5	5	5	17	4	3 ↓	5	7 ↑	3 ↓	6 ↑	5	2
Agree	52	51	54	33	55	55	51	50	53	52	53	48
Strongly agree	11	12 ↑	9 ↓		12	11	10	9	14 ↑	9 ↓	10	11
SUB-TOTAL AGREE	63	63	63	33	67	66	61	59 ↓	67 ↑	61 ↓	63	59
Don't know	6	6	7		4	4 ↓	6	9 ↑	2 ↓	8 ↑	7 ↑	2 ↓
Disability service system												
	Total 2022 n = 2504	Male n = 1197	Female n = 1301	Non- binary n = 6^	18-24 years n = 293	25-39 years n = 835	40-59 years n = 603	60+ years n = 773	Yes n = 859	No n = 1634	No n = 2280	Yes n = 224
Strongly disagree	3	4	3		3	3	4	3	3	3	3	6
Disagree	17	16	18	33	18	16	20	16	17	17	16 ↓	26 ↑
SUB-TOTAL DISAGREE	20	19	22	33	21	19	24	19	20	21	19 ↓	33 ↑
No opinion	5	6	5	17	3	5	6	6	4	6	5	2
Agree	51	52	50	33	53	55 ↑	49	48	53	51	52	48
Strongly agree	9	10	9	17	14 ↑	10	8	8	13 ↑	8 ↓	9	11
SUB-TOTAL AGREE	61	63	59	50	67	65 ↑	57	56 ↓	65 ↑	58 ↓	61	59
Don't know	14	13	15		9 ↓	11 ↓	13	19 ↑	10 ↓	15 ↑	14 ↑	6 ↓
Mental health system												
	Total 2022 n = 2504	Male n = 1198	Female n = 1300	Non- binary n = 6^	18-24 years n = 293	25-39 years n = 834	40-59 years n = 605	60+ years n = 772	Yes n = 858	No n = 1635	No n = 2280	Yes n = 224
Strongly disagree	6	5	7		5	7	7	4	7	5	5 ↓	10 ↑
Disagree	22	19 ↓	25 ↑	33	25	24	22	18 ↓	22	22	21	28
SUB-TOTAL DISAGREE	28	24 ↓	31 ↑	33	30	31	29	23 ↓	29	27	27 ↓	38 ↑
No opinion	4	4	4	17	4	3	4	5	3	5	4	3
Agree	47	48	45	50	48	47	47	45	47	47	47	42
Strongly agree	9	11 ↑	8 ↓		13	10	8	8	13 ↑	7 ↓	9	11
SUB-TOTAL AGREE	56	59 ↑	53 ↓	50	61	58	56	53	60 ↑	54 ↓	56	54
Don't know	12	13	11		5 ↓	9 ↓	11	19 ↑	7 ↓	14 ↑	13 ↑	5 ↓

Blue↑/Red↓ figures and arrows indicate the result is significantly higher/lower than the average at at least the 95% confidence level

Base: All respondents electing to answer

^ Caution small cell size

Table 3.5.1: Agreement with statements about whether the decisions are made in the best interest of children and young people by gender, age, responsibility for children and Aboriginal and/or Torres Strait Islander status (2022) (continued)

Q53 Column %	Total 2022	GENDER			AGE (years)				RESPONSIBLE FOR CHILD 0-17 YRS		ABORIGINAL AND/OR TORRES STRAIT ISLANDER	
% of respondents												
Child protection and family support system												
	Total 2022 n = 2503	Male n = 1197	Female n = 1300	Non- binary n = 6^	18-24 years n = 293	25-39 years n = 833	40-59 years n = 604	60+ years n = 773	Yes n = 859	No n = 1633	No n = 2280	Yes n = 223
Strongly disagree	7	6	8		4	7	9	7	9 ↑	6 ↓	7 ↓	13 ↑
Disagree	23	21	25	33	19	20 ↓	25	27 ↑	21	24	23	29
SUB-TOTAL DISAGREE	31	28 ↓	33 ↑	33	24 ↓	27 ↓	34	34 ↑	31	30	29 ↓	42 ↑
No opinion	5	5	5	33	3	6	6	5	4	6	5	4
Agree	43	45	41	17	52 ↑	48 ↑	38 ↓	38 ↓	45	42	44	39
Strongly agree	9	10	8		13 ↑	9	9	6 ↓	11	8	9	10
SUB-TOTAL AGREE	52	55 ↑	49 ↓	17	66 ↑	58 ↑	47 ↓	44 ↓	55	50	52	49
Don't know	12	12	13	17	8	10 ↓	13	16 ↑	10 ↓	13 ↑	13 ↑	5 ↓
Youth justice system												
	Total 2022 n = 2506	Male n = 1199	Female n = 1301	Non- binary n = 6^	18-24 years n = 293	25-39 years n = 836	40-59 years n = 604	60+ years n = 773	Yes n = 859	No n = 1636	No n = 2282	Yes n = 224
Strongly disagree	14	14	13		7 ↓	14	18 ↑	13	16	13	13	19
Disagree	29	28	30	67	27	28	26	34 ↑	27	30	29	26
SUB-TOTAL DISAGREE	43	42	43	67	34 ↓	41	44	47 ↑	42	43	43	46
No opinion	5	4	5	17	3	5	5	5	4	5	5	4
Agree	34	35	33		45 ↑	37	31	28 ↓	35	33	34	35
Strongly agree	6	7	6		11 ↑	7	6	4 ↓	9 ↑	5 ↓	6	10
SUB-TOTAL AGREE	40	41	39		56 ↑	44 ↑	37	32 ↓	44 ↑	38 ↓	39	45
Don't know	13	12	13	17	8 ↓	10	14	16 ↑	9 ↓	14 ↑	13 ↑	5 ↓
Public housing system												
	Total 2022 n = 2502	Male n = 1198	Female n = 1298	Non- binary n = 6^	18-24 years n = 292	25-39 years n = 834	40-59 years n = 604	60+ years n = 772	Yes n = 858	No n = 1633	No n = 2281	Yes n = 221
Strongly disagree	9	8	10		6	9	10	10	10	8	8 ↓	17 ↑
Disagree	32	31	33	50	35	30	33	33	31	33	32	36
SUB-TOTAL DISAGREE	41	39	43	50	41	39	43	42	40	42	40 ↓	53 ↑
No opinion	6	7	6	17	7	6	7	6	6	7	7	4
Agree	30	31	29	33	37 ↑	34 ↑	27	25 ↓	34 ↑	28 ↓	30	27
Strongly agree	5	6	4		8	5	6	3 ↓	7 ↑	4 ↓	5 ↓	9 ↑
SUB-TOTAL AGREE	35	36	33	33	44 ↑	39 ↑	33	27 ↓	41 ↑	32 ↓	35	35
Don't know	17	18	17		8 ↓	15	16	24 ↑	13 ↓	20 ↑	18 ↑	8 ↓

Blue↑/Red↓ figures and arrows indicate the result is significantly higher/lower than the average at at least the 95% confidence level

Base: All respondents electing to answer

^ Caution small cell size

Table 3.5.2: Agreement with statements about whether the decisions are made in the best interest of children and young people by region (2022)

Q53 Column %	Total 2022	REGION			
% of respondents					
Health system					
	Total 2022 n = 2506	South East n = 1252	Northern n = 502	Southern n = 502	Central n = 250
Strongly disagree	3	2	3	4	4
Disagree	14	13	15	16	16
SUB-TOTAL DISAGREE	17	15	18	20	20
No opinion	4	4	3	5	2
Agree	59	58	60	58	65
Strongly agree	14	17 ↑	13	11	8
SUB-TOTAL AGREE	73	74	74	69	73
Don't know	6	7	6	6	4
Education system					
	Total 2022 n = 2508	South East n = 1253	Northern n = 503	Southern n = 502	Central n = 250
Strongly disagree	4	4	6	4	7
Disagree	22	21	24	22	21
SUB-TOTAL DISAGREE	26	25	30	26	28
No opinion	5	5	3	6	3
Agree	52	52	51	51	58
Strongly agree	11	12	9	10	6
SUB-TOTAL AGREE	63	64	60	61	64
Don't know	6	6	7	7	4
Disability service system					
	Total 2022 n = 2504	South East n = 1250	Northern n = 502	Southern n = 502	Central n = 250
Strongly disagree	3	3	3	4	5
Disagree	17	18	16	17	15
SUB-TOTAL DISAGREE	20	21	20	21	20
No opinion	5	5	4	8	3
Agree	51	51	53	48	59
Strongly agree	9	10	9	9	8
SUB-TOTAL AGREE	61	60	62	57	67
Don't know	14	14	15	14	10
Mental health system					
	Total 2022 n = 2504	South East n = 1250	Northern n = 503	Southern n = 501	Central n = 250
Strongly disagree	6	5	6	7	7
Disagree	22	21	24	22	22
SUB-TOTAL DISAGREE	28	26	29	29	29
No opinion	4	4	3	6	4
Agree	47	47	47	44	51
Strongly agree	9	10	10	8	8
SUB-TOTAL AGREE	56	57	57	52	59
Don't know	12	13	11	13	8

Blue ↑ / Red ↓ figures and arrows indicate the result is significantly higher/lower than the average at at least the 95% confidence level
Base: All respondents electing to answer

Table 3.5.2: Agreement with statements about whether the decisions are made in the best interest of children and young people by region (2022) (continued)

Q53 Column %	Total 2022	REGION			
% of respondents					
Child protection and family support system					
	Total 2022 n = 2503	South East n = 1251	Northern n = 502	Southern n = 500	Central n = 250
Strongly disagree	7	6	9	8	10
Disagree	23	23	26	21	27
SUB-TOTAL DISAGREE	31	28	34	29	36
No opinion	5	5	4	7	5
Agree	43	44	41	42	45
Strongly agree	9	11 ↑	7	8	5
SUB-TOTAL AGREE	52	55	47	50	50
Don't know	12	12	14	13	9
Youth justice system					
	Total 2022 n = 2506	South East n = 1252	Northern n = 503	Southern n = 502	Central n = 249
Strongly disagree	14	10 ↓	21 ↑	14	17
Disagree	29	28	31	28	31
SUB-TOTAL DISAGREE	43	38 ↓	52 ↑	41	47
No opinion	5	5	4	6	4
Agree	34	37 ↑	28	31	36
Strongly agree	6	6	6	7	5
SUB-TOTAL AGREE	40	43 ↑	34	37	41
Don't know	13	14	10	15	8
Public housing system					
	Total 2022 n = 2502	South East n = 1250	Northern n = 503	Southern n = 500	Central n = 249
Strongly disagree	9	8	11	9	9
Disagree	32	31	31	38	32
SUB-TOTAL DISAGREE	41	39	42	47	41
No opinion	6	6	6	9	5
Agree	30	31	29	24 ↓	37
Strongly agree	5	5	6	4	4
SUB-TOTAL AGREE	35	36	35	28 ↓	41
Don't know	17	19	17	17	13

Blue↑/Red↓ figures and arrows indicate the result is significantly higher/lower than the average at at least the 95% confidence level

Base: All respondents electing to answer

3.6 Views of children and young people listened to and valued

Q54 How much do you agree or disagree that the views of children and young people are listened to and valued by the following systems?

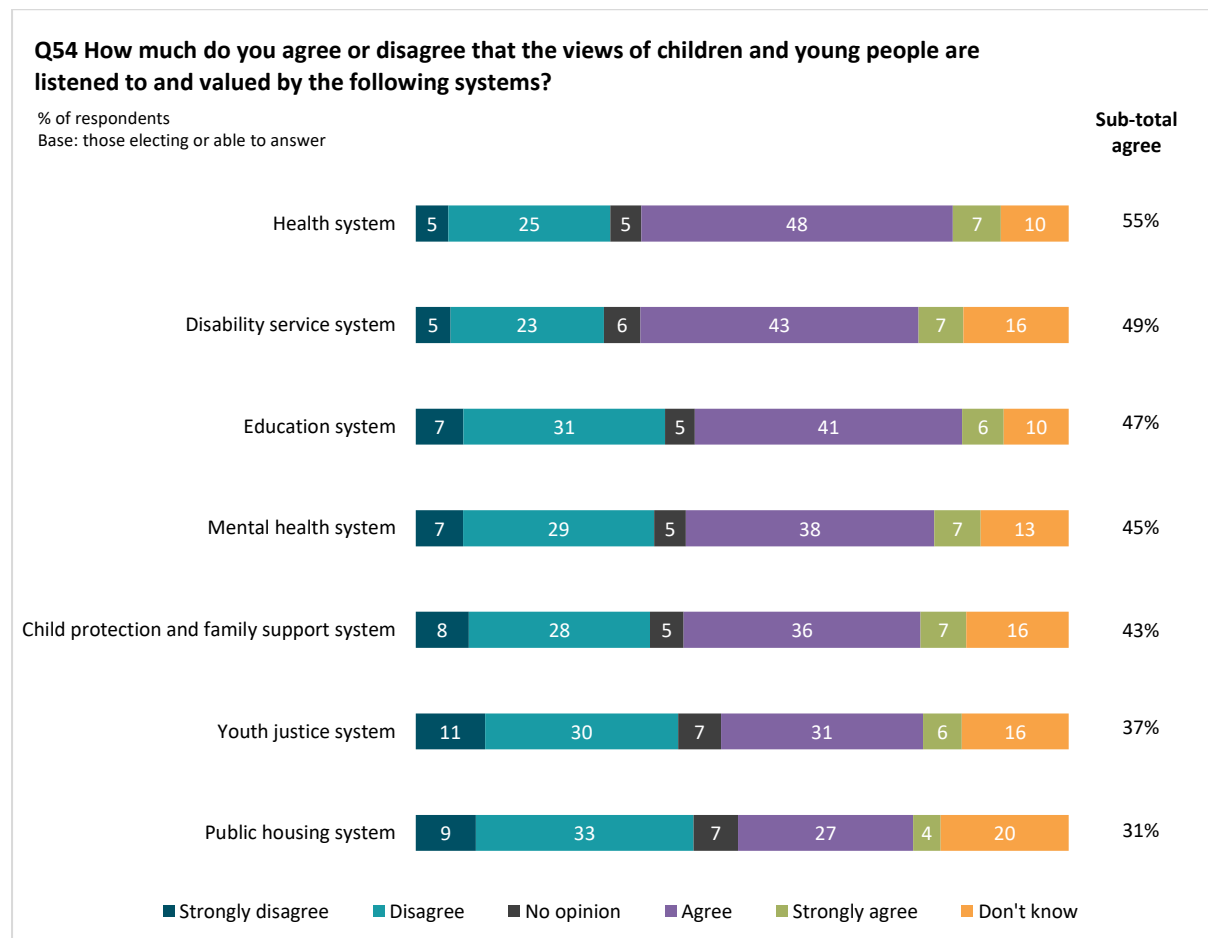
New question in 2022.

3.6.1 2022 results

Respondents were asked about their level of agreement that various systems listen to and value the views of children and young people.

The systems where overall agreement (agree/strongly agree) that the system listens to and values children and young people was higher included the health system (55%), disability services system (49%) and the education system (47%). Agreement was lower among respondents regarding the public housing system (31%) and youth justice system (37%). However, a reasonable proportion of 'don't know' responses were also obtained with those systems (20% and 16% respectively).

Figure 3.6.1: Agreement with statements about whether the views of children and young people are listened to and valued (2022)



Respondents who declined to answer the question have been removed from the base when reporting results. The base is therefore different for each of the above statements. The smallest base was n=2496 (when 13 respondents declined to answer) for the item 'Youth Justice system'. The reader is referred to Table 3.6.1 for a description of the base for each statement.

3.6.2 Sub-group differences (2022)

Agreement on whether the views of children and young people are listened to by various systems was analysed by key sub-groups.

Across all systems, respondents responsible for children aged 0-17 years and respondents aged under 40 years held higher than average agreement (agree/strongly agree) that the views of children and young people are listened to and valued. Respondents identifying as Aboriginal and/or Torres Strait Islander consistently provided higher than average levels of disagreement (disagree/strongly disagree) regarding all systems. Respondents with no responsibility for children were more likely than average to state they 'did not know'.

Females were more likely than average to disagree (disagree/strongly disagree) that the health system (32%, 30% average disagreement), the mental health system (40%, 37% average disagreement) or the child protection and family support system (38%, 36% average disagreement) listen to and value the views of children and young people.

Respondents residing in Northern Queensland were more likely than average to disagree (disagree/strongly disagree) that the youth justice system (48%, 40% average disagreement) or the public housing system (49%, 43% average disagreement) listen to and value the views of children and young people.

Other sub-group differences are detailed in Tables 3.6.1 and 3.6.2 following.

Table 3.6.1: Agreement with statements about whether the views of children and young people are listened to and valued by gender, age, responsibility for children and Aboriginal and/or Torres Strait Islander status (2022)

Q54 Column %	Total 2022	GENDER			AGE (years)				RESPONSIBLE FOR CHILD 0-17 YRS	ABORIGINAL AND/OR TORRES STRAIT ISLANDER		
% of respondents												
Health system												
	Total 2022 n = 2499	Male n = 1194	Female n = 1299	Non- binary n = 6^	18-24 years n = 292	25-39 years n = 835	40-59 years n = 604	60+ years n = 768	Yes n = 858	No n = 1630	No n = 2276	Yes n = 223
Strongly disagree	5	5	5	17	5	5	6	3 ↓	6	4	5 ↓	9 ↑
Disagree	25	23	27	17	26	26	24	24	25	25	25	28
SUB-TOTAL DISAGREE	30	27 ↓	32 ↑	33	31	32	30	27	31	29	29 ↓	37 ↑
No opinion	5	6	4	33	2	3	5	7 ↑	3 ↓	6 ↑	5	3
Agree	48	48	48	33	52	50	48	44 ↓	52 ↑	46 ↓	48	46
Strongly agree	7	8	7		10	9	8	4 ↓	10 ↑	6 ↓	7	10
SUB-TOTAL AGREE	55	56	55	33	62 ↑	59 ↑	56	48 ↓	62 ↑	52 ↓	55	56
Don't know	10	11	10		4 ↓	6 ↓	9	18 ↑	4 ↓	13 ↑	11 ↑	4 ↓

Blue ↑ / Red ↓ figures and arrows indicate the result is significantly higher/lower than the average at at least the 95% confidence level

Base: All respondents electing to answer

^ Caution small cell size

Table 3.6.1: Agreement with statements about whether the views of children and young people are listened to and valued by gender, age, responsibility for children and Aboriginal and/or Torres Strait Islander status (2022) (continued)

Q54 Column %	Total 2022	GENDER			AGE (years)				RESPONSIBLE FOR CHILD 0-17 YRS		ABORIGINAL AND/OR TORRES STRAIT ISLANDER	
% of respondents												
Disability service system												
	Total 2022 n = 2499	Male n = 1193	Female n = 1300	Non- binary n = 6 [^]	18-24 years n = 291	25-39 years n = 834	40-59 years n = 605	60+ years n = 769	Yes n = 859	No n = 1629	No n = 2276	Yes n = 223
Strongly disagree	5	5	6		5	5	7	4	6	5	5 ↓	9 ↑
Disagree	23	23	24	33	23	23	24	24	22	24	23 ↓	30 ↑
SUB-TOTAL DISAGREE	29	28	29	33	28	28	31	28	29	29	28 ↓	39 ↑
No opinion	6	5	6	33	4	6	5	7	5	6	6	4
Agree	43	43	42	33	49 ↑	47 ↑	40	37 ↓	45	41	43	38
Strongly agree	7	8	6		10	8	7	4 ↓	10 ↑	6 ↓	7 ↓	11 ↑
SUB-TOTAL AGREE	49	51	48	33	59 ↑	55 ↑	48	41 ↓	55 ↑	47 ↓	50	48
Don't know	16	16	16		9 ↓	11 ↓	16	24 ↑	12 ↓	18 ↑	17 ↑	8 ↓
Education system												
	Total 2022 n = 2500	Male n = 1195	Female n = 1299	Non- binary n = 6 [^]	18-24 years n = 292	25-39 years n = 834	40-59 years n = 605	60+ years n = 769	Yes n = 858	No n = 1631	No n = 2277	Yes n = 223
Strongly disagree	7	7	7	33	8	8	9	6	8	7	7 ↓	13 ↑
Disagree	31	29	33		36	32	29	29	31	31	30	35
SUB-TOTAL DISAGREE	38	36	40	33	43	40	38	35	39	38	37 ↓	48 ↑
No opinion	5	6 ↑	3 ↓	33	3	3 ↓	4	7 ↑	2 ↓	6 ↑	5	2
Agree	41	41	41	33	41	44 ↑	41	37 ↓	46 ↑	38 ↓	41	37
Strongly agree	6	7	6		9	7	7	4 ↓	9 ↑	5 ↓	6	9
SUB-TOTAL AGREE	47	48	47	33	50	52 ↑	49	40 ↓	55 ↑	43 ↓	47	47
Don't know	10	10	10		3 ↓	6 ↓	10	17 ↑	4 ↓	13 ↑	11 ↑	3 ↓
Mental health system												
	Total 2022 n = 2497	Male n = 1194	Female n = 1298	Non- binary n = 5 [^]	18-24 years n = 290	25-39 years n = 835	40-59 years n = 603	60+ years n = 769	Yes n = 857	No n = 1630	No n = 2275	Yes n = 222
Strongly disagree	7	6 ↓	9 ↑		7	8	9	5 ↓	9	7	7 ↓	11 ↑
Disagree	29	27	31	60	32	30	29	28	28	30	29 ↓	37 ↑
SUB-TOTAL DISAGREE	37	33 ↓	40 ↑	60	39	38	38	33 ↓	37	37	35 ↓	48 ↑
No opinion	5	5	4	20	3	3 ↓	5	7 ↑	3 ↓	6 ↑	5	4
Agree	38	38	38	20	41	42 ↑	38	32 ↓	44 ↑	35 ↓	39	32
Strongly agree	7	8	6		11 ↑	8	7	4 ↓	10 ↑	6 ↓	7	11
SUB-TOTAL AGREE	45	46	44	20	52 ↑	51 ↑	46	36 ↓	53 ↑	41 ↓	45	43
Don't know	13	15 ↑	12 ↓		5 ↓	8 ↓	12	24 ↑	7 ↓	17 ↑	14 ↑	5 ↓

Blue↑/Red↓ figures and arrows indicate the result is significantly higher/lower than the average at at least the 95% confidence level

Base: All respondents electing to answer

[^] Caution small cell size

Table 3.6.1: Agreement with statements about whether the views of children and young people are listened to and valued by gender, age, responsibility for children and Aboriginal and/or Torres Strait Islander status (2022) (continued)

Q54 Column %	Total 2022	GENDER			AGE (years)				RESPONSIBLE FOR CHILD 0-17 YRS		ABORIGINAL AND/OR TORRES STRAIT ISLANDER	
% of respondents												
Child protection and family support system												
	Total 2022 n = 2497	Male n = 1195	Female n = 1296	Non- binary n = 6^	18-24 years n = 291	25-39 years n = 833	40-59 years n = 605	60+ years n = 768	Yes n = 857	No n = 1629	No n = 2274	Yes n = 223
Strongly disagree	8	7	9	17	5	9	10	7	10 ↑	7 ↓	8 ↓	14 ↑
Disagree	28	26	29	17	23	25	29	31 ↑	26	29	27	34
SUB-TOTAL DISAGREE	36	33 ↓	38 ↑	33	28 ↓	34	39	38	36	36	35 ↓	48 ↑
No opinion	5	5	5	33	3	5	6	5	3 ↓	6 ↑	5	3
Agree	36	38	34	33	48 ↑	40 ↑	32	31 ↓	39	35	37	32
Strongly agree	7	8	6		10	8	8	4 ↓	10 ↑	6 ↓	7	10
SUB-TOTAL AGREE	43	47 ↑	40 ↓	33	58 ↑	48 ↑	40	35 ↓	49 ↑	41 ↓	43	42
Don't know	16	15	16		10 ↓	13 ↓	15	21 ↑	12 ↓	18 ↑	16 ↑	8 ↓
Youth justice system												
	Total 2022 n = 2496	Male n = 1194	Female n = 1296	Non- binary n = 6^	18-24 years n = 291	25-39 years n = 834	40-59 years n = 603	60+ years n = 768	Yes n = 857	No n = 1628	No n = 2274	Yes n = 222
Strongly disagree	11	11	10	17	8	12	11	10	12	10	10 ↓	17 ↑
Disagree	30	28	31	33	30	28	28	32	29	30	29	32
SUB-TOTAL DISAGREE	40	40	41	50	38	40	40	41	41	40	39 ↓	49 ↑
No opinion	7	6	7	33	4	6	7	8	4 ↓	8 ↑	7	6
Agree	31	33	29	17	38 ↑	35 ↑	31	24 ↓	35 ↑	29 ↓	31	28
Strongly agree	6	6	6		11 ↑	6	6	4	7	5	6 ↓	10 ↑
SUB-TOTAL AGREE	37	39	35	17	48 ↑	41 ↑	36	28 ↓	43 ↑	34 ↓	37	38
Don't know	16	15	18		9 ↓	13 ↓	16	23 ↑	12 ↓	18 ↑	17 ↑	7 ↓
Public housing system												
	Total 2022 n = 2497	Male n = 1193	Female n = 1298	Non- binary n = 6^	18-24 years n = 291	25-39 years n = 833	40-59 years n = 604	60+ years n = 769	Yes n = 858	No n = 1628	No n = 2275	Yes n = 222
Strongly disagree	9	9	9		7	9	10	9	10	9	8 ↓	17 ↑
Disagree	33	32	34	33	33	33	33	34	32	34	33	37
SUB-TOTAL DISAGREE	43	41	44	33	40	42	43	43	41	43	41 ↓	54 ↑
No opinion	7	7	7	33	6	6	7	8	6	7	7	4
Agree	27	28	26	33	38 ↑	31 ↑	25	20 ↓	31 ↑	25 ↓	27	26
Strongly agree	4	5	4		6	5	5	2 ↓	7 ↑	3 ↓	4 ↓	9 ↑
SUB-TOTAL AGREE	31	33	29	33	44 ↑	36 ↑	30	21 ↓	38 ↑	28 ↓	31	34
Don't know	20	19	20		10 ↓	15 ↓	20	27 ↑	15 ↓	22 ↑	21 ↑	8 ↓

Blue↑/Red↓ figures and arrows indicate the result is significantly higher/lower than the average at at least the 95% confidence level

Base: All respondents electing to answer

^ Caution small cell size

Table 3.6.2: Agreement with statements about whether the views of children and young people are listened to and valued by region (2022)

Q54 Column %	Total 2022	REGION			
% of respondents					
Health system					
	Total 2022 n = 2506	South East n = 1252	Northern n = 502	Southern n = 502	Central n = 250
Strongly disagree	5	4	5	5	8
Disagree	25	24	28	25	22
SUB-TOTAL DISAGREE	30	28	33	31	30
No opinion	5	4	4	6	6
Agree	48	48	47	46	51
Strongly agree	7	9	6	7	5
SUB-TOTAL AGREE	55	57	53	53	56
Don't know	10	11	10	11	8
Disability service system					
	Total 2022 n = 2504	South East n = 1250	Northern n = 502	Southern n = 502	Central n = 250
Strongly disagree	5	4	6	6	8
Disagree	23	24	25	22	18
SUB-TOTAL DISAGREE	29	29	31	28	26
No opinion	6	5	5	6	7
Agree	43	41	44	40	50
Strongly agree	7	8	6	7	5
SUB-TOTAL AGREE	49	49	49	48	55
Don't know	16	17	14	18	12
Education system					
	Total 2022 n = 2508	South East n = 1253	Northern n = 503	Southern n = 502	Central n = 250
Strongly disagree	7	6	8	7	12
Disagree	31	29	36	32	27
SUB-TOTAL DISAGREE	38	36	44	39	39
No opinion	5	4	4	6	4
Agree	41	41	39	40	46
Strongly agree	6	7	6	6	3
SUB-TOTAL AGREE	47	48	44	46	50
Don't know	10	12	8	9	7
Mental health system					
	Total 2022 n = 2504	South East n = 1250	Northern n = 503	Southern n = 501	Central n = 250
Strongly disagree	7	6	8	7	11
Disagree	29	29	31	31	26
SUB-TOTAL DISAGREE	37	35	39	38	37
No opinion	5	4	5	6	5
Agree	38	38	38	36	42
Strongly agree	7	8	7	6	7
SUB-TOTAL AGREE	45	46	45	42	49
Don't know	13	15	11	14	8

Blue↑/Red↓ figures and arrows indicate the result is significantly higher/lower than the average at at least the 95% confidence level
Base: All respondents electing to answer

Table 3.6.2: Agreement with statements about whether the views of children and young people are listened to and valued by region (2022)
(continued)

Q54 Column %	Total 2022	REGION			
% of respondents					
Child protection and family support system					
	Total 2022 n = 2503	South East n = 1251	Northern n = 502	Southern n = 500	Central n = 250
Strongly disagree	8	7	9	7	12
Disagree	28	27	31	28	24
SUB-TOTAL DISAGREE	36	34	40	35	36
No opinion	5	5	5	5	8
Agree	36	37	33	35	41
Strongly agree	7	8	6	6	6
SUB-TOTAL AGREE	43	45	39	42	46
Don't know	16	16	16	18	10
Youth justice system					
	Total 2022 n = 2506	South East n = 1252	Northern n = 503	Southern n = 502	Central n = 249
Strongly disagree	11	8 ↓	16 ↑	10	13
Disagree	30	28	32	31	27
SUB-TOTAL DISAGREE	40	37 ↓	48 ↑	41	40
No opinion	7	6	7	8	7
Agree	31	33	27	26	38
Strongly agree	6	7	5	6	3
SUB-TOTAL AGREE	37	40	32	32	41
Don't know	16	18	13	19	11
Public housing system					
	Total 2022 n = 2502	South East n = 1250	Northern n = 503	Southern n = 500	Central n = 249
Strongly disagree	9	8	10	10	12
Disagree	33	32	39	33	27
SUB-TOTAL DISAGREE	43	40	49 ↑	42	39
No opinion	7	7	5	9	8
Agree	27	27	24	24	35
Strongly agree	4	5	5	3	3
SUB-TOTAL AGREE	31	32	29	27	38
Don't know	20	21	16	22	15

Blue↑/Red↓ figures and arrows indicate the result is significantly higher/lower than the average at at least the 95% confidence level

Base: All respondents electing to answer

3.7 Discrimination of children and young people

*Q55 Do you feel that children and young people from any of the following groups experience discrimination in terms of having their rights upheld?
New question in 2022.*

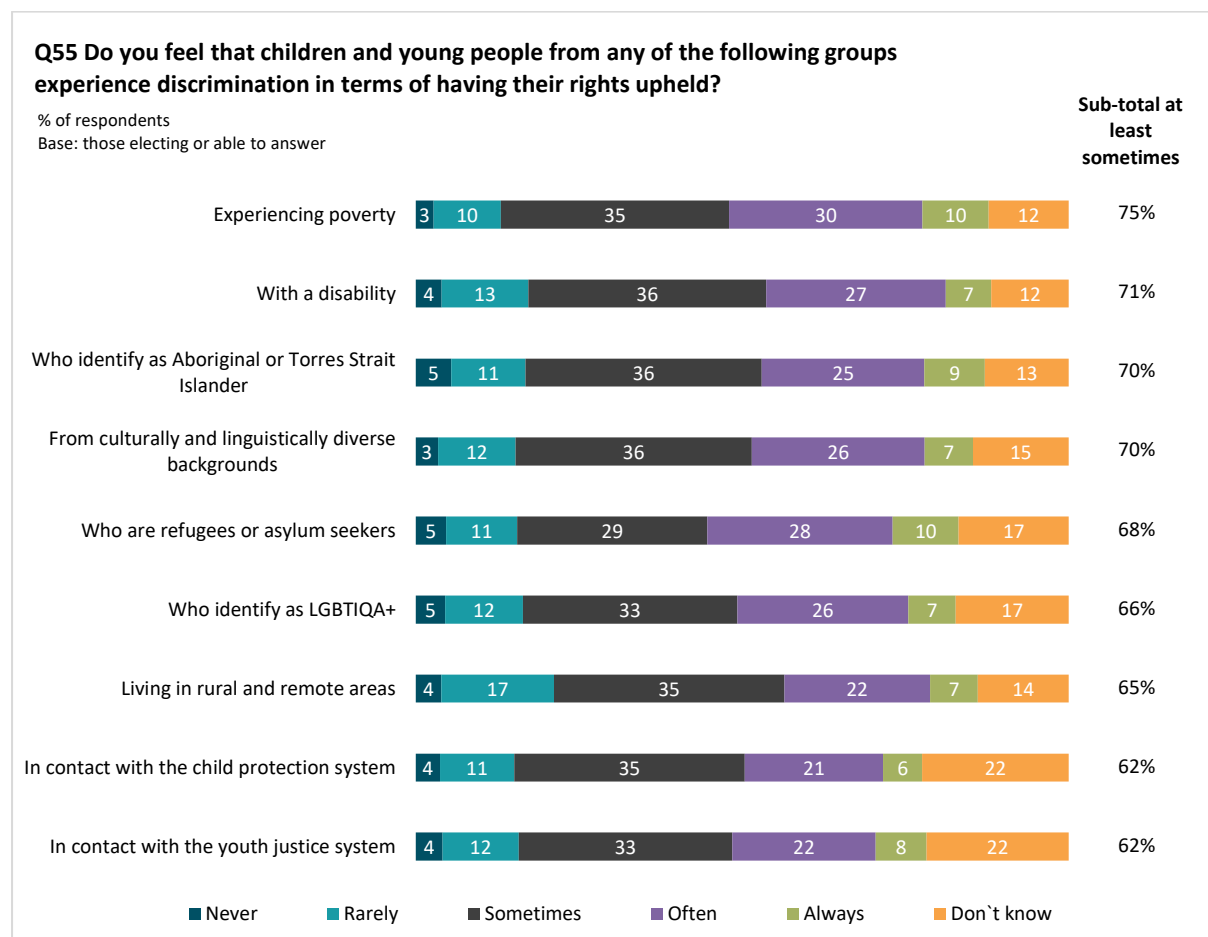
3.7.1 2022 results

Respondents were asked their level of agreement about whether cohorts of children and young people experience discrimination in terms of having their rights upheld.

Respondents felt that children and young people across all cohorts examined experience discrimination in terms of having their rights upheld at least sometimes (sometimes/often/always).

Cohorts considered more likely than others to experience discrimination in terms of having their rights upheld at least sometimes (sometimes/often/always) were those experiencing poverty (75%), children with a disability (71%), those who identify as Aboriginal and/or Torres Strait Islander (70%), those from culturally and linguistically diverse backgrounds (70%) and refugees/asylum seekers (68%).

Figure 3.7.1: Agreement with statements about whether children and young people experience discrimination (2022)



Respondents who declined to answer the question have been removed from the base when reporting results. The base is therefore different for each of the above statements. The smallest base was n=2501 (when 8 respondents declined to answer) for two items 'Disability and child protection system'. The reader is referred to Table 3.7.1 for a description of the base for each statement.

3.7.2 Sub-group differences (2022)

The degree to which respondents felt that various cohorts experienced discrimination was analysed by key sub-groups.

Across all systems, higher than average perceptions existed among females and respondents who identify as Aboriginal and/or Torres Strait Islander that children and young people in the cohorts of interest experience discrimination in terms of their rights being upheld at least some of the time.

Males, those aged 60 years or older or those who are not responsible for children aged 0-17 years were more likely than average to respond they 'don't know' the degree to which children and young people experience discrimination in terms of their rights being upheld.

A number of age-based sub-group differences were noted across this question:

- Those aged 18- 24 years old were more likely than average to consider that children who identify as Aboriginal and/or Torres Strait Islander experience discrimination at least sometimes (77%, 70% average), similarly for children who identify as LGBTIQ+ (73%, 66% average) and for those who are in contact with the youth justice system (70%, 62% average)
- Those aged 18-24 years old were more likely to perceive discrimination occurs rarely for children and young people living in rural and remote areas (28%, 17% average)
- Respondents aged 25-39 years old were more likely than average to perceive that children and young people from culturally and linguistically diverse backgrounds (74%, 70% average) or those who are refugee or asylum seekers (72%, 68% average) experience discrimination at least sometimes.

Residents who live in South East Queensland were more likely than average to perceive that children and young people who are refugees or asylum seekers experience discrimination in terms of their rights being upheld at least sometimes (70%, 68% average). Respondents living in Northern Queensland were more likely than average to consider discrimination of this nature occurs at least sometimes for children living in rural and remote areas (71%, 65% average).

Other sub-group differences are detailed in Tables 3.7.1 and 3.7.2 following.

Table 3.7.1: Agreement with statements about whether children and young people experience discrimination by gender, age, responsibility for children and Aboriginal and/or Torres Strait Islander status (2022)

Q55 Column %	Total 2022	GENDER			AGE (years)				RESPONSIBLE FOR CHILD 0-17 YRS		ABORIGINAL AND/OR TORRES STRAIT ISLANDER	
% of respondents												
Experiencing poverty												
	Total 2022 n = 2506	Male n = 1198	Female n = 1302	Non- binary n = 6^	18-24 years n = 293	25-39 years n = 836	40-59 years n = 605	60+ years n = 772	Yes n = 860	No n = 1635	No n = 2282	Yes n = 224
Always	10	8 ↓	13 ↑	17	12	9	13 ↑	8	12	9	8 ↓	29 ↑
Often	30	27 ↓	32	33	31	31	25 ↓	31	28	31	30	28
Sometimes	35	36	34	50	33	35	37	34	37	34	36 ↑	24 ↓
SUB-TOTAL AT LEAST SOMETIMES	75	71 ↓	78 ↑	100	76	75	75	73	77	74	74	81
Rarely	10	13 ↑	8 ↓		13	11	10	8	11	10	11	8
Never	3	3	2		2	4 ↑	3	2	3	2	3	4
Don't know	12	13	11		9	10 ↓	12	17 ↑	9 ↓	14 ↑	13 ↑	7 ↓

Blue ↑ / Red ↓ figures and arrows indicate the result is significantly higher/lower than the average at at least the 95% confidence level

Base: All respondents electing to answer

^ Caution small cell size

Table 3.7.1: Agreement with statements about whether children and young people experience discrimination by gender, age, responsibility for children and Aboriginal and/or Torres Strait Islander status (2022) (continued)

Q55 Column %	Total 2022	GENDER			AGE (years)				RESPONSIBLE FOR CHILD 0-17 YRS		ABORIGINAL AND/OR TORRES STRAIT ISLANDER	
% of respondents												
With a disability												
	Total 2022 n = 2501	Male n = 1197	Female n = 1298	Non- binary n = 6^	18-24 years n = 292	25-39 years n = 834	40-59 years n = 604	60+ years n = 771	Yes n = 858	No n = 1633	No n = 2277	Yes n = 224
Always	7	6 ↓	8	33	12 ↑	7	7	4 ↓	8	6	6 ↓	18 ↑
Often	27	24 ↓	30 ↑	33	34 ↑	30	25	24 ↓	26	28	27	28
Sometimes	36	38	36	33	28 ↓	36	37	40	38	36	37	33
SUB-TOTAL AT LEAST SOMETIMES	71	67 ↓	74 ↑	100	74	74	69	68	73	70	70 ↓	79 ↑
Rarely	13	16 ↑	11 ↓		14	13	13	13	13	13	14	10
Never	4	4	4		4	5	5	2 ↓	6 ↑	3 ↓	4	4
Don't know	12	12	11		7 ↓	8 ↓	13	16 ↑	8 ↓	14 ↑	12	7
Who identify as Aboriginal or Torres Strait Islander												
	Total 2022 n = 2509	Male n = 1201	Female n = 1302	Non- binary n = 6^	18-24 years n = 293	25-39 years n = 836	40-59 years n = 605	60+ years n = 775	Yes n = 860	No n = 1638	No n = 2285	Yes n = 224
Always	9	8 ↓	11 ↑	17	13 ↑	10	10	6 ↓	11	8	7 ↓	31 ↑
Often	25	22 ↓	27 ↑	50	31 ↑	26	24	22	24	26	25	28
Sometimes	36	36	36	33	33	36	35	38	38	36	37	29
SUB-TOTAL AT LEAST SOMETIMES	70	67 ↓	74 ↑	100	77 ↑	72	69	67 ↓	72	70	69 ↓	88 ↑
Rarely	11	13 ↑	10 ↓		11	13	11	11	12	11	12 ↑	6 ↓
Never	5	6	5		4	6	7	4	7 ↑	5 ↓	6	3
Don't know	13	14	12		8 ↓	9 ↓	14	18 ↑	9 ↓	15 ↑	14 ↑	3 ↓
From culturally and linguistically diverse backgrounds												
	Total 2022 n = 2502	Male n = 1198	Female n = 1298	Non- binary n = 6^	18-24 years n = 292	25-39 years n = 834	40-59 years n = 603	60+ years n = 773	Yes n = 856	No n = 1636	No n = 2279	Yes n = 223
Always	7	6	8	17	12 ↑	8	8	4 ↓	9	7	6 ↓	19 ↑
Often	26	25	28	33	30	30 ↑	25	23 ↓	28	26	26	30
Sometimes	36	35	37	33	33	36	36	38	37	36	37 ↑	27 ↓
SUB-TOTAL AT LEAST SOMETIMES	70	66 ↓	74 ↑	83	76	74 ↑	69	65 ↓	73	69	69	76
Rarely	12	15 ↑	9 ↓	17	13	12	12	11	12	12	12	7
Never	3	4	3		2	4	4	2	5 ↑	3 ↓	3	4
Don't know	15	15	15		10 ↓	10 ↓	15	21 ↑	11 ↓	17 ↑	15	13

Blue↑/Red↓ figures and arrows indicate the result is significantly higher/lower than the average at at least the 95% confidence level

Base: All respondents electing to answer

^ Caution small cell size

Table 3.7.1: Agreement with statements about whether children and young people experience discrimination by gender, age, responsibility for children and Aboriginal and/or Torres Strait Islander status (2022) (continued)

Q55 Column %	Total 2022	GENDER			AGE (years)				RESPONSIBLE FOR CHILD 0-17 YRS		ABORIGINAL AND/OR TORRES STRAIT ISLANDER	
% of respondents												
Who are refugees or asylum seekers												
	Total 2022 n = 2495	Male n = 1194	Female n = 1295	Non- binary n = 6^	18-24 years n = 292	25-39 years n = 833	40-59 years n = 603	60+ years n = 767	Yes n = 856	No n = 1629	No n = 2272	Yes n = 223
Always	10	9	11	17	16 ↑	9	11	8 ↓	9	11	9 ↓	19 ↑
Often	28	25 ↓	31 ↑	33	34	32 ↑	25	25	29	28	29	25
Sometimes	29	30	28	17	24	30	30	29	31	28	30	24
SUB-TOTAL AT LEAST SOMETIMES	68	64 ↓	71 ↑	67	74	72 ↑	66	62 ↓	69	67	68	68
Rarely	11	13 ↑	9 ↓	33	13	11	9	12	10	11	11	8
Never	5	6 ↑	3 ↓		3	4	6	4	6	4	5	5
Don't know	17	16	17		10 ↓	13 ↓	19	22 ↑	14 ↓	18 ↑	17	19
Who identify as LGBTIQA+												
	Total 2022 n = 2508	Male n = 1201	Female n = 1301	Non- binary n = 6^	18-24 years n = 293	25-39 years n = 835	40-59 years n = 605	60+ years n = 775	Yes n = 860	No n = 1637	No n = 2284	Yes n = 224
Always	7	5 ↓	9 ↑	17	13 ↑	7	8	5 ↓	8	7	6 ↓	20 ↑
Often	26	22 ↓	30 ↑	33	34 ↑	28	25	23 ↓	27	26	26	25
Sometimes	33	33	33	50	26 ↓	35	32	34	33	33	33	29
SUB-TOTAL AT LEAST SOMETIMES	66	60 ↓	72 ↑	100	73 ↑	69	65	62 ↓	68	66	66	73
Rarely	12	14 ↑	10 ↓		13	14 ↑	10	10	13	11	12	8
Never	5	6 ↑	3 ↓		4	6	5	3 ↓	7 ↑	3 ↓	5	4
Don't know	17	19 ↑	15 ↓		10 ↓	11 ↓	20	26 ↑	12 ↓	20 ↑	18	15
Living in rural and remote areas												
	Total 2022 n = 2505	Male n = 1198	Female n = 1301	Non- binary n = 6^	18-24 years n = 293	25-39 years n = 835	40-59 years n = 605	60+ years n = 772	Yes n = 860	No n = 1634	No n = 2282	Yes n = 223
Always	7	6	8	17	6	7	9	7	8	7	6 ↓	26 ↑
Often	22	22	23	17	21	24	21	22	23	22	22	22
Sometimes	35	34	37	33	29	36	35	37	36	35	36 ↑	28 ↓
SUB-TOTAL AT LEAST SOMETIMES	65	61 ↓	68 ↑	67	56 ↓	66	65	66	67	64	64 ↓	76 ↑
Rarely	17	20 ↑	15 ↓	33	28 ↑	19	15	13 ↓	19	16	18	14
Never	4	5	3		4	5	4	2 ↓	5	3	4	3
Don't know	14	14	14		11	10 ↓	15	18 ↑	9 ↓	16 ↑	15 ↑	7 ↓

Blue↑/Red↓ figures and arrows indicate the result is significantly higher/lower than the average at at least the 95% confidence level

Base: All respondents electing to answer

^ Caution small cell size

Table 3.7.1: Agreement with statements about whether children and young people experience discrimination by gender, age, responsibility for children and Aboriginal and/or Torres Strait Islander status (2022) (continued)

Q55 Column %	Total 2022	GENDER			AGE (years)				RESPONSIBLE FOR CHILD 0-17 YRS		ABORIGINAL AND/OR TORRES STRAIT ISLANDER	
% of respondents												
In contact with the child protection system												
	Total 2022 n = 2501	Male n = 1196	Female n = 1299	Non- binary n = 6^	18-24 years n = 293	25-39 years n = 834	40-59 years n = 602	60+ years n = 772	Yes n = 858	No n = 1632	No n = 2279	Yes n = 222
Always	6	5 ↓	7 ↑		7	6	8	4 ↓	8 ↑	5 ↓	5 ↓	20 ↑
Often	21	18 ↓	24 ↑	33	22	22	20	20	21	22	21	23
Sometimes	35	36	35	50	38	36	35	34	36	35	36	33
SUB-TOTAL AT LEAST SOMETIMES	62	59 ↓	66 ↑	83	67	65	62	58 ↓	65	61	61 ↓	76 ↑
Rarely	11	14 ↑	9 ↓	17	12	12	12	10	13	11	12	8
Never	4	4	3		5	4	4	2 ↓	5	3	4	5
Don't know	22	24	21		15 ↓	19 ↓	21	30 ↑	17 ↓	25 ↑	23 ↑	12 ↓
In contact with the youth justice system												
	Total 2022 n = 2503	Male n = 1196	Female n = 1301	Non- binary n = 6^	18-24 years n = 293	25-39 years n = 834	40-59 years n = 604	60+ years n = 772	Yes n = 858	No n = 1634	No n = 2280	Yes n = 223
Always	8	7	9	17	8	8	10	6 ↓	10 ↑	7 ↓	6 ↓	21 ↑
Often	22	19 ↓	24 ↑	50	27	24	19	20	21	23	22	26
Sometimes	33	33	32	17	34	32	34	31	34	32	33	26
SUB-TOTAL AT LEAST SOMETIMES	62	59 ↓	65 ↑	83	70 ↑	65	63	57 ↓	65	61	61 ↓	74 ↑
Rarely	12	14 ↑	10 ↓	17	14	12	10	11	12	12	12	9
Never	4	5	3		3	5	5	3	5	4	4	4
Don't know	22	22	21		14 ↓	18 ↓	22	28 ↑	18 ↓	24 ↑	23 ↑	13 ↓

Blue ↑ / Red ↓ figures and arrows indicate the result is significantly higher/lower than the average at at least the 95% confidence level

Base: All respondents electing to answer

^ Caution small cell size

Table 3.7.2: Agreement with statements about whether children and young people experience discrimination by region (2022)

Q55 Column %	Total 2022	REGION			
% of respondents					
Experiencing poverty					
	Total 2022 n = 2506	South East n = 1253	Northern n = 502	Southern n = 501	Central n = 250
Always	10%	8%	16% ↑	9%	10%
Often	30%	29%	31%	32%	27%
Sometimes	35%	37%	29% ↓	34%	41%
SUB-TOTAL AT LEAST SOMETIMES	75%	74%	75%	74%	78%
Rarely	10%	11%	11%	8%	12%
Never	3%	3%	3%	2%	2%
Don't know	12%	12%	12%	16%	8%
With a disability					
	Total 2022 n = 2501	South East n = 1249	Northern n = 503	Southern n = 500	Central n = 249
Always	7%	7%	10%	5%	5%
Often	27%	26%	29%	28%	30%
Sometimes	36%	36%	33%	39%	39%
SUB-TOTAL AT LEAST SOMETIMES	71%	70%	71%	71%	75%
Rarely	13%	14%	13%	12%	13%
Never	4%	4%	5%	2%	3%
Don't know	12%	12%	11%	14%	9%
Who identify as Aboriginal or Torres Strait Islander					
	Total 2022 n = 2509	South East n = 1254	Northern n = 503	Southern n = 502	Central n = 250
Always	9%	8%	15% ↑	7%	6%
Often	25%	24%	27%	24%	28%
Sometimes	36%	38%	32%	35%	38%
SUB-TOTAL AT LEAST SOMETIMES	70%	70%	74%	66%	72%
Rarely	11%	11%	11%	13%	11%
Never	5%	5%	7%	5%	6%
Don't know	13%	13%	9% ↓	17%	12%
From culturally and linguistically diverse backgrounds					
	Total 2022 n = 2502	South East n = 1250	Northern n = 502	Southern n = 501	Central n = 249
Always	7%	7%	10%	5%	8%
Often	26%	26%	27%	27%	25%
Sometimes	36%	38%	31%	37%	38%
SUB-TOTAL AT LEAST SOMETIMES	70%	71%	69%	69%	71%
Rarely	12%	12%	12%	10%	12%
Never	3%	4%	4%	3%	2%
Don't know	15%	13%	15%	18%	15%
Who are refugees or asylum seekers					
	Total 2022 n = 2495	South East n = 1250	Northern n = 501	Southern n = 495	Central n = 249
Always	10%	10%	12%	8%	10%
Often	28%	29%	28%	28%	26%
Sometimes	29%	31%	24% ↓	27%	33%
SUB-TOTAL AT LEAST SOMETIMES	68%	70% ↑	64%	63%	70%
Rarely	11%	10%	12%	12%	11%
Never	5%	5%	5%	3%	4%
Don't know	17%	14% ↓	20%	21% ↑	16%

Blue ↑ / Red ↓ figures and arrows indicate the result is significantly higher/lower than the average at at least the 95% confidence level

Base: All respondents electing to answer

Table 3.7.2: Agreement with statements about whether children and young people experience discrimination by region (2022) (continued)

Q55 Column %	Total 2022	REGION			
% of respondents					
Who identify as LGBTIQ+					
	Total 2022 n = 2508	South East n = 1254	Northern n = 502	Southern n = 502	Central n = 250
Always	7%	7%	10% ↑	6%	6%
Often	26%	26%	26%	25%	26%
Sometimes	33%	33%	32%	32%	34%
SUB-TOTAL AT LEAST SOMETIMES	66%	67%	68%	63%	66%
Rarely	12%	12%	10%	11%	14%
Never	5%	5%	5%	4%	4%
Don't know	17%	16%	17%	21%	15%
Living in rural and remote areas					
	Total 2022 n = 2505	South East n = 1252	Northern n = 503	Southern n = 500	Central n = 250
Always	7%	5% ↓	14% ↑	7%	8%
Often	22%	20%	24%	24%	26%
Sometimes	35%	36%	33%	34%	38%
SUB-TOTAL AT LEAST SOMETIMES	65%	61% ↓	71% ↑	66%	72%
Rarely	17%	20% ↑	14%	15%	17%
Never	4%	4%	4%	4%	2%
Don't know	14%	15%	11%	16%	9%
In contact with the child protection system					
	Total 2022 n = 2501	South East n = 1252	Northern n = 502	Southern n = 498	Central n = 249
Always	6%	6%	9% ↑	5%	4%
Often	21%	21%	22%	21%	21%
Sometimes	35%	35%	32%	35%	41%
SUB-TOTAL AT LEAST SOMETIMES	62%	62%	63%	62%	67%
Rarely	11%	12%	12%	8%	11%
Never	4%	4%	4%	3%	3%
Don't know	22%	22%	21%	27%	20%
In contact with the youth justice system					
	Total 2022 n = 2503	South East n = 1251	Northern n = 501	Southern n = 501	Central n = 250
Always	8%	6%	13% ↑	7%	6%
Often	22%	22%	22%	22%	20%
Sometimes	33%	34%	29%	32%	37%
SUB-TOTAL AT LEAST SOMETIMES	62%	62%	64%	60%	64%
Rarely	12%	11%	12%	11%	14%
Never	4%	4%	6%	3%	2%
Don't know	22%	22%	18%	26%	20%

Blue↑/Red↓ figures and arrows indicate the result is significantly higher/lower than the average at at least the 95% confidence level

Base: All respondents electing to answer

3.8 Mental health

*Q56 How much do you agree or disagree with the following statements about youth mental health services in your area?
Youth mental health services in my area are:
New question in 2022.*

3.8.1 2022 results

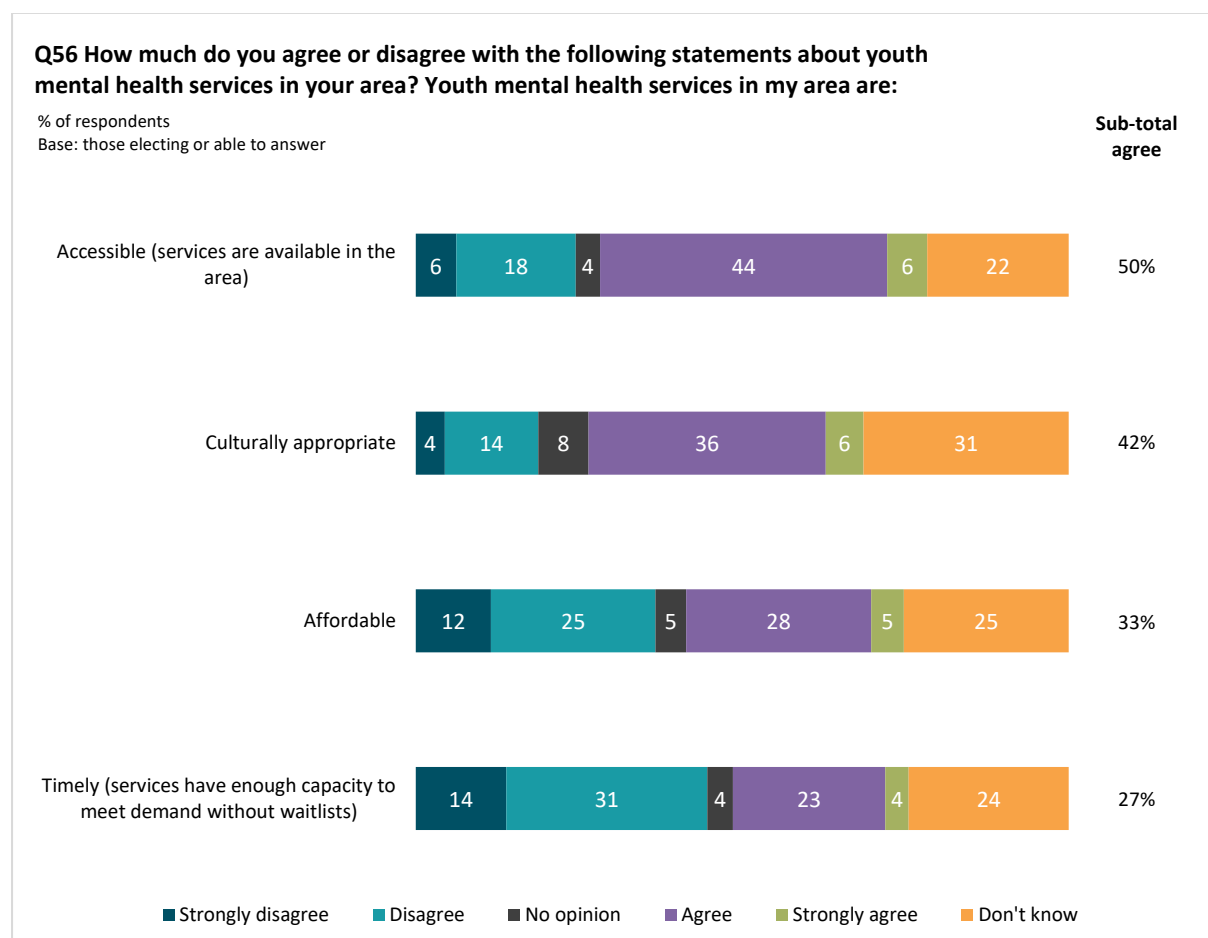
Respondents were asked to rate their agreement with various statements regarding youth mental health services in their area.

Respondents were most likely to agree (agree/strongly) that mental health services in their area are accessible (50%) and are culturally appropriate (42%). Agreement was divided on whether mental health services are affordable (33% agree/strongly agree, 37% disagree/strongly disagree).

Respondents were most likely to disagree that mental health services in their area have enough capacity to meet demand without waitlists (45% disagree/strongly disagree, 27% agree/strongly agree).

A high proportion of respondents were unable to answer these questions about mental health services (22%-31% don't know).

Figure 3.8.1: Agreement with statements about mental health services (2022)



Respondents who declined to answer the question have been removed from the base when reporting results. The base is therefore different for each of the above statements. The smallest base was n=2503 (when 6 respondents declined to answer) for two items: 'Accessible and Timely'. The reader is referred to Table 3.8.1 for a description of the base for each statement.

3.8.2 Sub-group differences (2022)

Views on youth mental health services were analysed by key sub-groups.

Respondents who are aged under 40 years or those who are responsible for children aged 0-17 years were more likely than average to have a more positive view of the accessibility, cultural appropriateness, affordability and timeliness of youth mental health services.

Males were more likely than females to agree (agree/strongly agree) that youth mental health services are accessible (54%, 50% average), affordable (37%, 33% average) or timely (32%, 27% average).

Respondents who identify as Aboriginal and/or Torres Strait Islander were more likely than average to disagree (disagree/strongly disagree) that youth mental health services are accessible (35%, 24% average) or culturally appropriate (39%, 19% average).

Perspectives on the accessibility of youth mental health services varied considerably based on geography. Respondents from Northern, Southern and Central Queensland were more likely on average to disagree (disagree/strongly disagree) that services are accessible (29%, 29%, 34% respectively) while respondents from South East Queensland were less likely to disagree (19%).

Other sub-group differences are detailed in Tables 3.8.1 and 3.8.2 following.

Table 3.8.1: Agreement with statements about mental health services by gender, age, responsibility for children and Aboriginal and/or Torres Strait Islander status (2022)

Q56 Column %	Total 2022	GENDER				AGE (years)				RESPONSIBLE FOR CHILD 0-17 YRS	ABORIGINAL AND/OR TORRES STRAIT ISLANDER	
% of respondents												
Accessible (services are available in the area)												
	Total 2022 n = 2503	Male n = 1198	Female n = 1299	Non- binary n = 6^	18-24 years n = 292	25-39 years n = 834	40-59 years n = 603	60+ years n = 774	Yes n = 855	No n = 1637	No n = 2279	Yes n = 224
Strongly disagree	6	5 ↓	7 ↑	17	5	7	8 ↑	4 ↓	8 ↑	5 ↓	6	6
Disagree	18	15 ↓	22 ↑	50	19	19	23 ↑	14 ↓	20	17	17 ↓	29 ↑
SUB-TOTAL DISAGREE	24	19 ↓	29 ↑	67	24	26	31 ↑	18 ↓	28 ↑	22 ↓	23 ↓	35 ↑
No opinion	4	4	3	17	2	4	3	5 ↑	2 ↓	5 ↑	4 ↑	1 ↓
Agree	44	46	42	17	52 ↑	51 ↑	41	36 ↓	49 ↑	42 ↓	44	45
Strongly agree	6	8 ↑	5 ↓		10 ↑	6	7	4 ↓	9 ↑	5 ↓	6	8
SUB-TOTAL AGREE	50	54 ↑	47 ↓	17	62 ↑	57 ↑	48	40 ↓	58 ↑	46 ↓	50	53
Don't know	22	23	21		11 ↓	13 ↓	19	37 ↑	12 ↓	27 ↑	23 ↑	11 ↓

Blue↑/Red↓ figures and arrows indicate the result is significantly higher/lower than the average at at least the 95% confidence level

Base: All respondents electing to answer

^ Caution small cell size

Table 3.8.1: Agreement with statements about mental health services by gender, age, responsibility for children and Aboriginal and/or Torres Strait Islander status (2022) (continued)

Q56 Column %	Total 2022	GENDER			AGE (years)				RESPONSIBLE FOR CHILD 0-17 YRS		ABORIGINAL AND/OR TORRES STRAIT ISLANDER	
% of respondents												
Culturally appropriate												
	Total 2022 n = 2504	Male n = 1199	Female n = 1299	Non- binary n = 6^	18-24 years n = 293	25-39 years n = 834	40-59 years n = 603	60+ years n = 774	Yes n = 857	No n = 1636	No n = 2281	Yes n = 223
Strongly disagree	4	3 ↓	6 ↑	17	1 ↓	5	7 ↑	3	6 ↑	4 ↓	4 ↓	12 ↑
Disagree	14	12 ↓	17 ↑		14	15	16	13	15	14	13 ↓	27 ↑
SUB-TOTAL DISAGREE	19	15 ↓	22 ↑	17	15	20	22 ↑	16 ↓	21	18	17 ↓	39 ↑
No opinion	8	9	7	17	8	7	7	9	6	9	8	4
Agree	36	37	36	67	50 ↑	43 ↑	34	25 ↓	43 ↑	33 ↓	37	34
Strongly agree	6	7 ↑	5 ↓		9	7	5	4 ↓	7 ↑	5 ↓	6	9
SUB-TOTAL AGREE	42	44	40	67	58 ↑	50 ↑	40	29 ↓	51 ↑	38 ↓	42	42
Don't know	31	32	31		19 ↓	22 ↓	31	46 ↑	23 ↓	36 ↑	33 ↑	15 ↓
Affordable												
	Total 2022 n = 2506	Male n = 1200	Female n = 1300	Non- binary n = 6^	18-24 years n = 293	25-39 years n = 835	40-59 years n = 603	60+ years n = 775	Yes n = 857	No n = 1638	No n = 2282	Yes n = 224
Strongly disagree	12	8 ↓	15 ↑	17	12	13	14 ↑	7 ↓	14 ↑	10 ↓	11	13
Disagree	25	23 ↓	28 ↑	33	28	30 ↑	24	20 ↓	28	24	25	23
SUB-TOTAL DISAGREE	37	30 ↓	43 ↑	50	40	43 ↑	38	27 ↓	42 ↑	34 ↓	37	36
No opinion	5	6	4	17	3	4	4	6 ↑	4	5	5	4
Agree	28	31 ↑	25 ↓	33	35 ↑	31 ↑	28	23 ↓	30	27	27 ↓	38 ↑
Strongly agree	5	6	5		6	5	7	3 ↓	8 ↑	4 ↓	5	6
SUB-TOTAL AGREE	33	37 ↑	30 ↓	33	41 ↑	36 ↑	34	27 ↓	38 ↑	31 ↓	32 ↓	44 ↑
Don't know	25	27 ↑	23		16 ↓	16 ↓	24	39 ↑	16 ↓	30 ↑	26 ↑	16 ↓
Timely (services have enough capacity to meet demand without waitlists)												
	Total 2022 n = 2503	Male n = 1199	Female n = 1298	Non- binary n = 6^	18-24 years n = 293	25-39 years n = 834	40-59 years n = 601	60+ years n = 775	Yes n = 855	No n = 1637	No n = 2279	Yes n = 224
Strongly disagree	14	9 ↓	18 ↑	33	13	16	18 ↑	9 ↓	18 ↑	12 ↓	14	15
Disagree	31	28 ↓	34 ↑	33	32	31	32	30	30	31	30	34
SUB-TOTAL DISAGREE	45	37 ↓	52 ↑	67	45	46	50 ↑	39 ↓	48 ↑	43 ↓	44	50
No opinion	4	5	3	17	3	3	4	5	3 ↓	5 ↑	4	1
Agree	23	27 ↑	20 ↓	17	31 ↑	30 ↑	20	15 ↓	28 ↑	21 ↓	23 ↓	30 ↑
Strongly agree	4	4	3		5	4	4	2 ↓	5 ↑	3 ↓	3	6
SUB-TOTAL AGREE	27	32 ↑	23 ↓	17	36 ↑	34 ↑	25	18 ↓	34 ↑	24 ↓	26 ↓	36 ↑
Don't know	24	27 ↑	22 ↓		15 ↓	16 ↓	22	39 ↑	16 ↓	29 ↑	26 ↑	13 ↓

Blue↑/Red↓ figures and arrows indicate the result is significantly higher/lower than the average at at least the 95% confidence level

Base: All respondents electing to answer

^ Caution small cell size

Table 3.8.2: Agreement with statements about mental health services by region (2022)

Q56 Column %	Total 2022	REGION			
% of respondents					
Accessible (services are available in the area)					
	Total 2022 n = 2503	South East n = 1250	Northern n = 502	Southern n = 502	Central n = 249
Strongly disagree	6	4 ↓	7	9	10 ↑
Disagree	18	15 ↓	22 ↑	21	24
SUB-TOTAL DISAGREE	24	19 ↓	29 ↑	29 ↑	34 ↑
No opinion	4	4	3	5	3
Agree	44	45	46	40	43
Strongly agree	6	6	8	5	5
SUB-TOTAL AGREE	50	51	53	45 ↓	49
Don't know	22	26 ↑	15 ↓	21	15 ↓
Culturally appropriate					
	Total 2022 n = 2504	South East n = 1251	Northern n = 501	Southern n = 502	Central n = 250
Strongly disagree	4	3 ↓	8 ↑	4	6
Disagree	14	13 ↓	19 ↑	14	16
SUB-TOTAL DISAGREE	19	16 ↓	26 ↑	18	22
No opinion	8	8	8	9	5
Agree	36	38	34	31 ↓	44 ↑
Strongly agree	6	5	8	6	3
SUB-TOTAL AGREE	42	43	42	37	47
Don't know	31	34 ↑	24 ↓	36	26
Affordable					
	Total 2022 n = 2506	South East n = 1252	Northern n = 502	Southern n = 502	Central n = 250
Strongly disagree	12	10	11	13	17 ↑
Disagree	25	26	23	24	26
SUB-TOTAL DISAGREE	37	36	34	37	44
No opinion	5	4	5	5	4
Agree	28	27	34 ↑	27	28
Strongly agree	5	6	5	4	3
SUB-TOTAL AGREE	33	32	39 ↑	31	31
Don't know	25	27	22	26	21
Timely (services have enough capacity to meet demand without waitlists)					
	Total 2022 n = 2503	South East n = 1249	Northern n = 502	Southern n = 502	Central n = 250
Strongly disagree	14	12 ↓	15	16	20 ↑
Disagree	31	29	34	31	32
SUB-TOTAL DISAGREE	45	41 ↓	49	47	52
No opinion	4	4	4	4	2
Agree	23	24	24	22	23
Strongly agree	4	4	3	3	2
SUB-TOTAL AGREE	27	28	28	25	24
Don't know	24	27 ↑	20 ↓	24	22

Blue↑/Red↓ figures and arrows indicate the result is significantly higher/lower than the average at at least the 95% confidence level
 Base: All respondents electing to answer

3.9 Accessing youth mental health services

Q57 Have you tried to access youth mental health services in the last three years?

Q58 Did you experience any barriers to accessing youth mental health services?

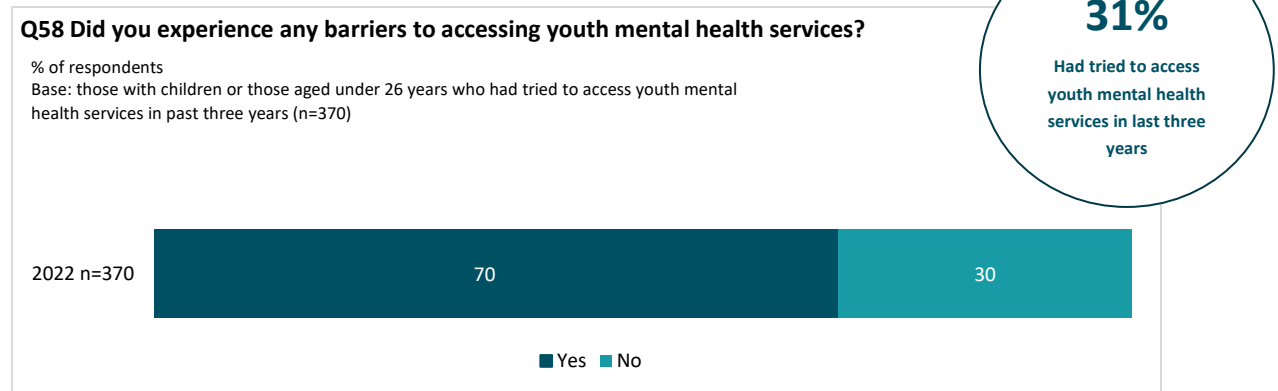
New questions in 2022.

3.9.1 2022 results

In the 2022 survey, respondents who were either aged under 26 years or had children were asked about their past access to youth mental health services.

Just under one third of these respondents had tried to access youth mental health services in the past three years (31%). Seven in ten who tried to access youth mental health services indicated they experienced barriers when trying to access these services.

Figure 3.9.1: Mental health services - access and barriers (2022)



3.9.2 Sub-group differences (2022)

The two questions related to access to youth mental health services were analysed by key sub-groups (Tables 3.9.1, 3.9.2, 3.9.3, and 3.9.4).

Respondents aged 18 to 24 years (40%) were more likely than average (31%) to indicate that they had tried to access youth mental health services in the past three years.

There were no statistically significant differences between key sub-groups in terms of experiencing barriers when trying to access mental health services.

Table 3.9.1: Mental health services - access by gender, age, responsibility for children and Aboriginal and/or Torres Strait Islander status (2022)

Q57 Column %	Total 2022 n = 1178	GENDER			AGE (years)				RESPONSIBLE FOR CHILD 0-17 YRS		ABORIGINAL AND/OR TORRES STRAIT ISLANDER	
		Male n = 458	Female n = 716	Non- binary n = 4^	18-24 years n = 293	25-39 years n = 572	40-59 years n = 289	60+ years n = 24^	Yes n = 860	No n = 316	No n = 1032	Yes n = 146

% of respondents

Q57. Have you tried to access youth mental health services in the last three years?												
Yes	31	27 ↓	34	100	40 ↑	26 ↓	34	33	31	33	31	36
No	69	73 ↑	66		60 ↓	74 ↑	66	67	69	67	69	64

Blue↑/Red↓ figures and arrows indicate the result is significantly higher/lower than the average at at least the 95% confidence level

Base: those with children or those aged under 26 years

^ Caution small cell size

Table 3.9.2: Mental health services - access by region (2022)

Q57 Column %	Total 2022 n = 1178	REGION			
		South East n = 540	Northern n = 258	Southern n = 242	Central n = 138

% of respondents

Q57. Have you tried to access youth mental health services in the last three years?					
Yes	31	34	31	30	25
No	69	66	69	70	75

Blue↑/Red↓ figures and arrows indicate the result is significantly higher/lower than the average at at least the 95% confidence level

Base: those with children or those aged under 26 years

Table 3.9.3: Mental health services - barriers by gender, age, responsibility for children and Aboriginal and/or Torres Strait Islander status (2022)

Q58 Column %	Total 2022 n = 370	GENDER			AGE (years)				RESPONSIBLE FOR CHILD 0-17 YRS		ABORIGINAL AND/OR TORRES STRAIT ISLANDER	
		Male n = 125	Female n = 241	Non- binary n = 4^	18-24 years n = 116	25-39 years n = 147	40-59 years n = 99	60+ years n = 8^	Yes n = 267	No n = 103	No n = 317	Yes n = 53

% of respondents

Q58. Did you experience any barriers to accessing youth mental health services?												
Yes	70	66	72	50	71	70	69	63	69	72	70	70
No	30	34	28	50	29	30	31	38	31	28	30	30

Blue↑/Red↓ figures and arrows indicate the result is significantly higher/lower than the average at at least the 95% confidence level

Base: those with children or those aged under 26 years who had tried to access youth mental health services in past three years

^ Caution small cell size

Table 3.9.4: Mental health services - barriers by region (2022)

Q58 Column %	Total 2022 n = 370	REGION			
		South East n = 184	Northern n = 79	Southern n = 72	Central n = 35

% of respondents

Q58. Did you experience any barriers to accessing youth mental health services?					
Yes	70	69	63	75	77
No	30	31	37	25	23

Blue↑/Red↓ figures and arrows indicate the result is significantly higher/lower than the average at at least the 95% confidence level

Base: those with children or those aged under 26 years who had tried to access youth mental health services in past three years

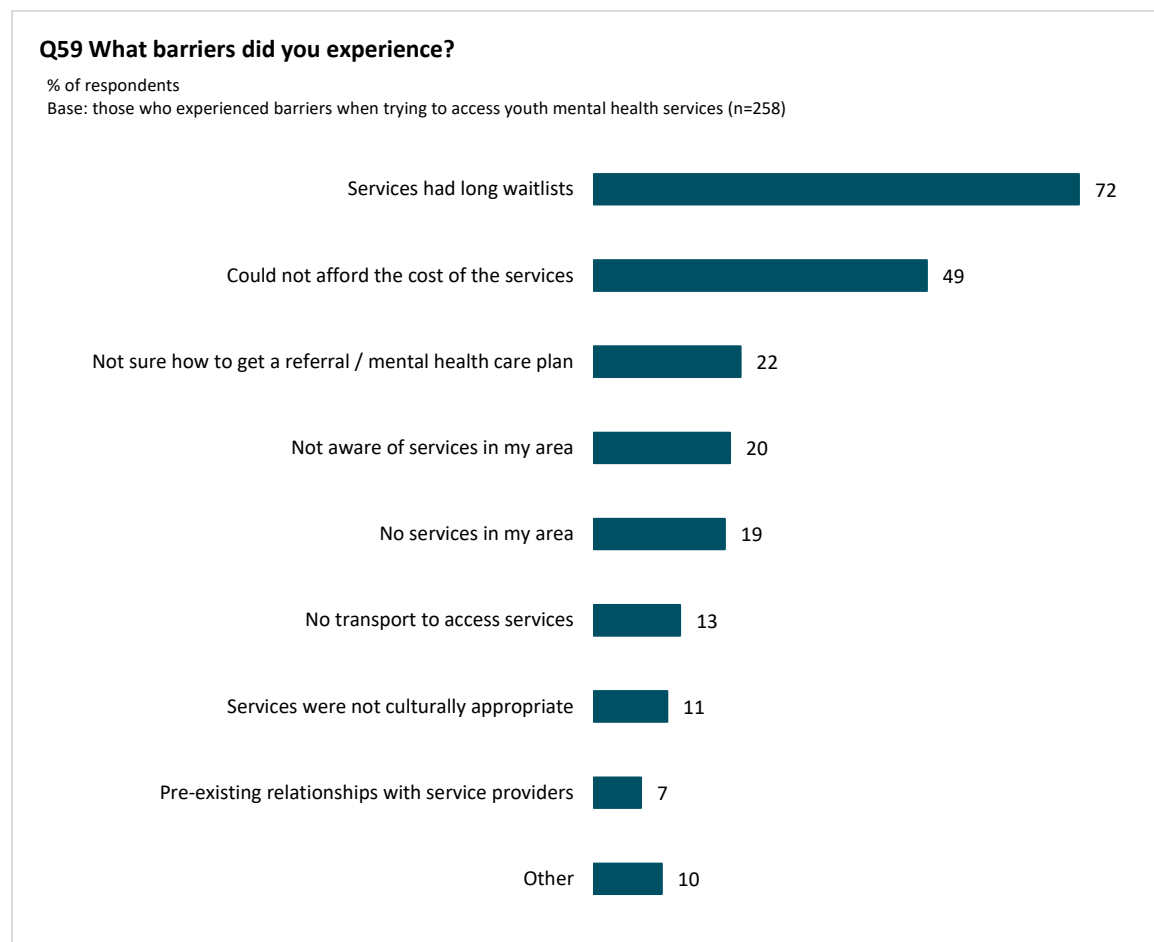
3.9.3 Barriers experienced when trying to access youth mental health services

Q59 What barriers did you experience?
New question in 2022.

Specific barriers that were experienced by respondents who tried to access youth mental health services were most commonly related to long wait lists (72%) or not being able to afford the cost of the services (49%).

22% were unsure how to get a referral or mental health care plan, 20% were unaware of services available locally, while 19% felt there were no services available in their area.

Figure 3.9.2: Barriers experienced when trying to access youth mental health services (2022)



3.9.3 Sub-group differences

The barriers to accessing youth mental health services were analysed by key sub-groups (Tables 3.9.5 and 3.9.6).

Female respondents who had difficulties accessing mental health services were more likely than average to not be able to afford the cost of services (57%, 49% average). While Aboriginal and/or Torres Strait Islander respondents were more likely than average to lack transportation to access services (38%, 13% average) or consider the services not culturally appropriate (32%, 11% average).

There were no statistically significant differences by region.

Table 3.9.5: Barriers experienced when trying to access youth mental health services (2022)

Q59 Column %	Total 2022 n = 258	GENDER			AGE (years)				RESPONSIBLE FOR CHILD 0-17 YRS		ABORIGINAL AND/OR TORRES STRAIT ISLANDER	
		Male n = 83	Female n = 173	Non- binary n = 2^	18-24 years n = 82	25-39 years n = 103	40-59 years n = 68	60+ years n = 5^	Yes n = 184	No n = 74	No n = 221	Yes n = 37
% of respondents												
Services had long waitlists	72	67	73	100	66	71	82	40	75	64	74	59
Could not afford the cost of the services	49	33 ↓	57 ↑	50	57	52	37	20	45	59	51	38
Not sure how to get a referral / mental health care plan	22	19	23	50	32	18	16	0	18	30	21	27
Not aware of services in my area	20	20	20	50	29	16	16	20	18	26	18	35
No services in my area	19	19	20		13	21	21	60	22	14	19	24
No transport to access services	13	11	13	50	15	13	12		11	16	9 ↓	38 ↑
Services were not culturally appropriate	11	17	8		6	13	13	20	13	7	7 ↓	32 ↑
Pre-existing relationships with service providers	7	8	6		9	5	7	20	5	11	8	
Other	10	10	10		6	9	16	20	13	3	10	14

Blue↑/Red↓ figures and arrows indicate the result is significantly higher/lower than the average at at least the 95% confidence level

Base: those who experienced barriers when trying to access youth mental health services

^ Caution small cell size

Table 3.9.6: Barriers experienced when trying to access youth mental health services by region (2022)

Q59 Column %	Total 2022 n = 258	REGION			
		South East n = 127	Northern n = 50	Southern n = 54	Central n = 27^
% of respondents					
Services had long waitlists	72	69	70	76	78
Could not afford the cost of the services	49	55	40	41	56
Not sure how to get a referral / mental health care plan	22	18	18	37	15
Not aware of services in my area	20	18	22	28	11
No services in my area	19	17	24	20	19
No transport to access services	13	11	20	13	7
Services were not culturally appropriate	11	9	22	9	
Pre-existing relationships with service providers	7	6	6	13	4
Other	10	9	14	15	

Base: those who experienced barriers when trying to access youth mental health services

^ Caution small cell size

3.10 Prioritisation, safety and inclusion of children and young people

Q60 How much do you agree or disagree with the following statements?
New question in 2022.

3.10.1 2022 results

Respondents were asked their level of agreement with statements relating to the prioritisation, safety and inclusion of children and young people.

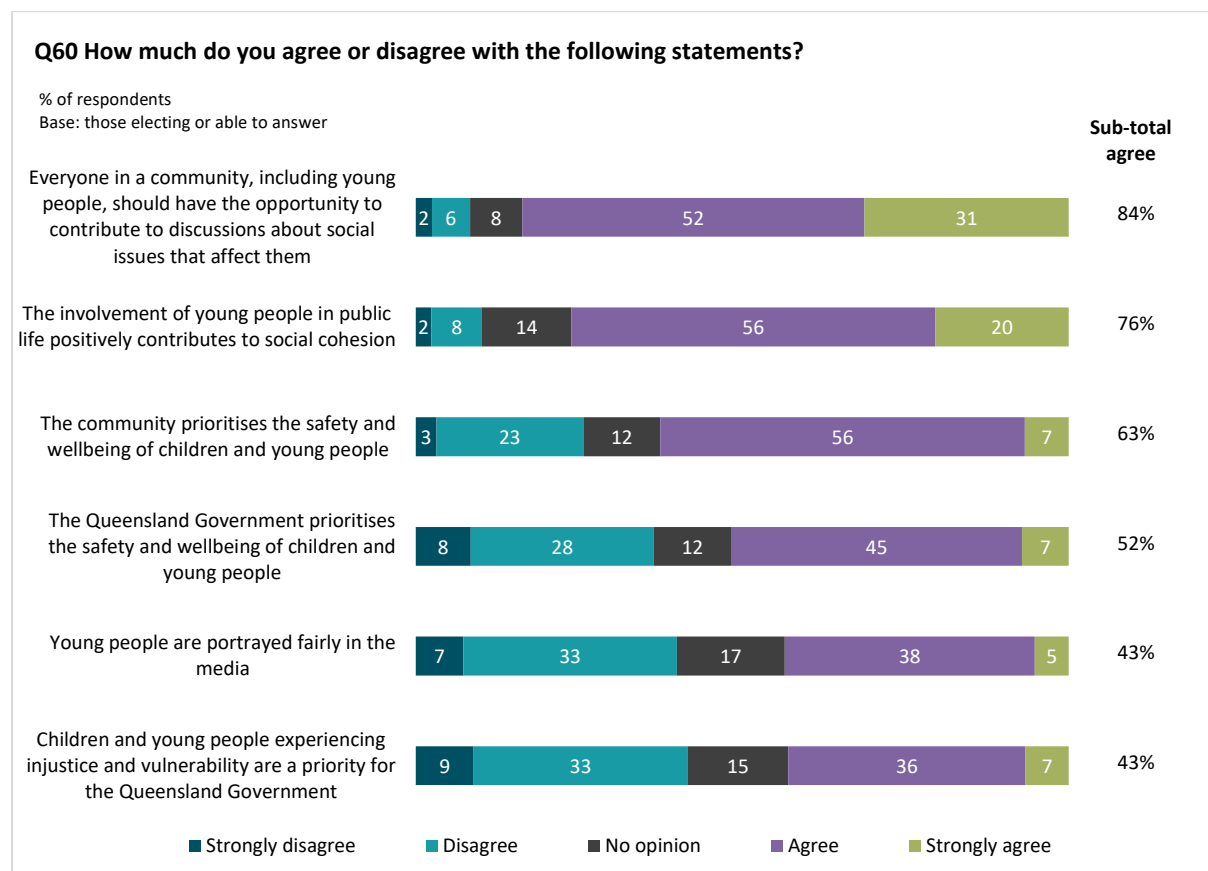
Agreement (agree/strongly agree) was highest for the statement *‘everyone in a community, including young people, should have the opportunity to contribute to discussions about social issues that affect them’* (84%) with 31% strongly agreeing with this statement and 52% agreeing. The second highest level of agreement was for the statement *‘the involvement of young people in public life positively contributes to social cohesion’* (76%) with 20% strongly agreeing and 56% agreeing.

63% of respondents agreed *‘the community prioritises the safety and wellbeing of children and young people’*, while 52% agreed *‘the Queensland Government prioritises the safety and wellbeing of children and young people’*.

Perceptions were more divided with respect to the following two statements with relatively equal proportions of agreement (agree/strongly agree) and disagreement (disagree/strongly disagree):

- *‘Young people are portrayed fairly in the media’* (43% agreement, 40% disagreement)
- *‘Children and young people experiencing injustice and vulnerability are a priority for the Queensland Government’* (43% agreement, 42% disagreement).

Figure 3.10.1: Prioritisation, safety and inclusion of children and young people (2022)



Respondents who declined to answer the question have been removed from the base when reporting results. The base is therefore different for each of the above statements. The smallest base was n=2498 (when 11 respondents declined to answer) for the item ‘The involvement of young people in public life positively contributes to social cohesion’. The reader is referred to Table 3.10.1 for a description of the base for each statement.

3.10.2 Sub-group differences (2022)

Respondents who are responsible for children aged 0-17 years were more likely than average to have higher levels of agreement with all the statements tested.

Male and female respondents had different views on a number of statements; with levels of agreement (agree/strongly agree) varying:

- *'Everyone in a community, including young people, should have the opportunity to contribute to discussions about social issues that affect them'* (82% males, 86% females)
- *'The community prioritises the safety and wellbeing of children and young people'* (67% males, 59% females)
- *'Young people are portrayed fairly in the media'* (49% males, 38% females)
- *'Children and young people experiencing injustice and vulnerability are a priority for the Queensland Government'* (46% males, 40% females).

Respondents aged under 40 years were more likely than average to agree (agree/strongly disagree) with the following statements compared to respondents aged 40 years or more:

- *'The Queensland Government prioritises the safety and wellbeing of children and young people'* (63% 18-24 year olds, 55% 25-39 year olds, 52% average)
- *'Children and young people experiencing injustice and vulnerability are a priority for the Queensland Government'* (52% 18-24 year olds, 47% 25-39 year olds, 43% average).

Respondents who identify as Aboriginal and/or Torres Strait Islander had higher than average disagreement levels (disagree/strongly disagree) that:

- *'Everyone in a community, including young people, should have the opportunity to contribute to discussions about social issues that affect them'* (13%, 8% average)
- *'The involvement of young people in public life positively contributes to social cohesion'* (16%, 10% average)
- *'The community prioritises the safety and wellbeing of children and young people'* (36%, 26% average)
- *'Young people are portrayed fairly in the media'* (49%, 40% average).

Residents from South East Queensland were more likely than average to agree (agree/strongly agree) that *'the Queensland Government prioritises the safety and wellbeing of children and young people'* (55%, 52% average).

Other key sub-group differences are outlined in Tables 3.10.1 and 3.10.2 following.

Table 3.10.1: Agreement with statements about protections and supports for children and young people by gender, age, responsibility for children and Aboriginal and/or Torres Strait Islander status (2022)

Q60 Column %	Total 2022	GENDER			AGE (years)				RESPONSIBLE FOR CHILD 0-17 YRS		ABORIGINAL AND/OR TORRES STRAIT ISLANDER	
% of respondents												
Everyone in a community, including young people, should have the opportunity to contribute to discussions about social issues that affect them												
	Total 2022 n = 2504	Male n = 1198	Female n = 1300	Non- binary n = 6^	18-24 years n = 293	25-39 years n = 835	40-59 years n = 602	60+ years n = 774	Yes n = 859	No n = 1634	No n = 2280	Yes n = 224
Strongly disagree	2	3	2		1	3	2	2	2	3	2 ↓	5 ↑
Disagree	6	7 ↑	5 ↓	17	9	6	6	5	6	6	6	8
SUB-TOTAL DISAGREE	8	10 ↑	6 ↓	17	10	9	9	7	8	8	8 ↓	13 ↑
No opinion	8	8	8	17	9	6	8	9	4 ↓	10 ↑	8	5
Agree	52	54	51	50	47	54	52	53	53	52	53	47
Strongly agree	31	28 ↓	35 ↑	17	34	31	31	31	34 ↑	30 ↓	31	35
SUB-TOTAL AGREE	84	82 ↓	86 ↑	67	81	85	83	84	87 ↑	82 ↓	84	82
The involvement of young people in public life positively contributes to social cohesion												
	Total 2022 n = 2498	Male n = 1194	Female n = 1298	Non- binary n = 6^	18-24 years n = 293	25-39 years n = 833	40-59 years n = 601	60+ years n = 771	Yes n = 856	No n = 1632	No n = 2274	Yes n = 224
Strongly disagree	2	3	2		0 ↓	4 ↑	2	2	3	2	2	4
Disagree	8	8	7	17	11	7	9	7	7	8	7 ↓	12 ↑
SUB-TOTAL DISAGREE	10	11	9	17	11	10	11	9	10	10	10 ↓	16 ↑
No opinion	14	13	15	17	14	12	13	16 ↑	11 ↓	15 ↑	14	13
Agree	56	56	56	50	53	59	55	54	58	55	56	52
Strongly agree	20	20	21	17	22	19	21	21	21	20	21	18
SUB-TOTAL AGREE	76	76	76	67	75	78	77	75	79 ↑	75 ↓	77	71

Blue↑/Red↓ figures and arrows indicate the result is significantly higher/lower than the average at at least the 95% confidence level

Base: All respondents electing to answer

^ Caution small cell size

Table 3.10.1: Agreement with statements about protections and supports for children and young people by gender, age, responsibility for children and Aboriginal and/or Torres Strait Islander status (2022) (continued)

Q60 Column %	Total 2022	GENDER			AGE (years)				RESPONSIBLE FOR CHILD 0-17 YRS		ABORIGINAL AND/OR TORRES STRAIT ISLANDER	
% of respondents												
The community prioritises the safety and wellbeing of children and young people												
	Total 2022 n = 2508	Male n = 1200	Female n = 1302	Non- binary n = 6^	18-24 years n = 293	25-39 years n = 836	40-59 years n = 605	60+ years n = 774	Yes n = 860	No n = 1637	No n = 2284	Yes n = 224
Strongly disagree	3	3	3		2	3	4	2	4	3	3	6
Disagree	23	20 ↓	25 ↑	50	20	22	24	23	23	23	22 ↓	30 ↑
SUB-TOTAL DISAGREE	26	23 ↓	28 ↑	50	23	25	28	25	26	25	25 ↓	36 ↑
No opinion	12	11	13	17	11	10	12	14 ↑	8 ↓	14 ↑	12	8
Agree	56	59 ↑	53 ↓	33	60	58	54	53	58	55	57 ↑	48 ↓
Strongly agree	7	7	6		6	7	7	7	8	6	7	8
SUB-TOTAL AGREE	63	67 ↑	59 ↓	33	67	65	60	60	66 ↑	61 ↓	63	56
The Queensland Government prioritises the safety and wellbeing of children and young people												
	Total 2022 n = 2501	Male n = 1196	Female n = 1299	Non- binary n = 6^	18-24 years n = 292	25-39 years n = 834	40-59 years n = 603	60+ years n = 772	Yes n = 858	No n = 1632	No n = 2277	Yes n = 224
Strongly disagree	8	9	8		4 ↓	9	9	9	10	8	8 ↓	13 ↑
Disagree	28	26	30	50	21 ↓	27	29	31	27	29	28	30
SUB-TOTAL DISAGREE	36	35	38	50	25 ↓	35	38	40 ↑	36	37	36	44
No opinion	12	11	13	17	12	9 ↓	12	14	7 ↓	14 ↑	12	8
Agree	45	45	44	33	55 ↑	48 ↑	41	40 ↓	47	43	45	40
Strongly agree	7	9 ↑	6 ↓		8	7	8	6	9 ↑	6 ↓	7	9
SUB-TOTAL AGREE	52	54	50	33	63 ↑	55 ↑	49	46 ↓	56 ↑	49 ↓	52	49
Young people are portrayed fairly in the media												
	Total 2022 n = 2500	Male n = 1196	Female n = 1298	Non- binary n = 6^	18-24 years n = 291	25-39 years n = 834	40-59 years n = 605	60+ years n = 770	Yes n = 859	No n = 1630	No n = 2276	Yes n = 224
Strongly disagree	7	7	8		10	9 ↑	7	5 ↓	9	6	6 ↓	17 ↑
Disagree	33	29 ↓	36 ↑	33	37	32	32	32	31	33	33	33
SUB-TOTAL DISAGREE	40	35 ↓	44 ↑	33	47 ↑	42	39	36 ↓	40	40	39 ↓	49 ↑
No opinion	17	15	18	33	13	12 ↓	17	22 ↑	12 ↓	19 ↑	17 ↑	10 ↓
Agree	38	43 ↑	34 ↓	33	33	42	38	37	42 ↑	36 ↓	38	37
Strongly agree	5	7 ↑	4 ↓		7	4	6	5	6	5	5	4
SUB-TOTAL AGREE	43	49 ↑	38 ↓	33	40	46	44	42	48 ↑	41 ↓	44	41

Blue↑/Red↓ figures and arrows indicate the result is significantly higher/lower than the average at at least the 95% confidence level

Base: All respondents electing to answer

^ Caution small cell size

Table 3.10.1: Agreement with statements about protections and supports for children and young people by gender, age, responsibility for children and Aboriginal and/or Torres Strait Islander status (2022) (continued)

Q60 Column %	Total 2022	GENDER			AGE (years)				RESPONSIBLE FOR CHILD 0-17 YRS		ABORIGINAL AND/OR TORRES STRAIT ISLANDER	
% of respondents												
Children and young people experiencing injustice and vulnerability are a priority for the Queensland Government												
	Total 2022 n = 2501	Male n = 1196	Female n = 1299	Non- binary n = 6^	18-24 years n = 293	25-39 years n = 834	40-59 years n = 604	60+ years n = 770	Yes n = 858	No n = 1632	No n = 2277	Yes n = 224
Strongly disagree	9	9	9	17	5	9	9	10	10	9	8 ↓	13 ↑
Disagree	33	30 ↓	35 ↑	33	29	32	33	34	30	34	33	28
SUB-TOTAL DISAGREE	42	39 ↓	44 ↑	50	35 ↓	41	42	44	40	43	42	41
No opinion	15	15	16	33	14	12 ↓	16	19 ↑	11 ↓	18 ↑	16	10
Agree	36	39 ↑	34 ↓	17	43	40	35	31 ↓	41 ↑	34 ↓	36	39
Strongly agree	7	7	6		9	7	6	5	9 ↑	5 ↓	6	9
SUB-TOTAL AGREE	43	46 ↑	40 ↓	17	52 ↑	47 ↑	42	36 ↓	50 ↑	39 ↓	42	49

Blue↑/Red↓ figures and arrows indicate the result is significantly higher/lower than the average at at least the 95% confidence level

Base: All respondents electing to answer

^ Caution small cell size

Table 3.10.2: Agreement with statements about protections and supports for children and young people by region (2022)

Q60 Column %	Total 2022	REGION			
% of respondents					
Everyone in a community, including young people, should have the opportunity to contribute to discussions about social issues that affect them					
	Total 2022 n = 2504	South East n = 1251	Northern n = 502	Southern n = 502	Central n = 249
Strongly disagree	2	2	4	2	2
Disagree	6	6	6	4	7
SUB-TOTAL DISAGREE	8	8	10	6	9
No opinion	8	9	6	9	6
Agree	52	50	53	57	55
Strongly agree	31	33	31	28	30
SUB-TOTAL AGREE	84	83	84	85	85
The involvement of young people in public life positively contributes to social cohesion					
	Total 2022 n = 2498	South East n = 1248	Northern n = 502	Southern n = 499	Central n = 249
Strongly disagree	2	2	3	2	2
Disagree	8	8	9	7	6
SUB-TOTAL DISAGREE	10	10	11	9	9
No opinion	14	14	12	15	11
Agree	56	53	59	56	61
Strongly agree	20	22	18	20	20
SUB-TOTAL AGREE	76	75	77	75	80
The community prioritises the safety and wellbeing of children and young people					
	Total 2022 n = 2508	South East n = 1253	Northern n = 503	Southern n = 502	Central n = 250
Strongly disagree	3	2	4	4	4
Disagree	23	20	27	24	24
SUB-TOTAL DISAGREE	26	22 ↓	31	28	28
No opinion	12	12	10	14	8
Agree	56	57	54	54	60
Strongly agree	7	8 ↑	6	5	4
SUB-TOTAL AGREE	63	65	59	58	64
The Queensland Government prioritises the safety and wellbeing of children and young people					
	Total 2022 n = 2501	South East n = 1249	Northern n = 503	Southern n = 501	Central n = 248
Strongly disagree	8	7	10	10	9
Disagree	28	26	31	28	33
SUB-TOTAL DISAGREE	36	33 ↓	41	38	42
No opinion	12	12	11	13	9
Agree	45	46	42	44	44
Strongly agree	7	9 ↑	6	5	5
SUB-TOTAL AGREE	52	55 ↑	47	49	49

Blue ↑ / Red ↓ figures and arrows indicate the result is significantly higher/lower than the average at at least the 95% confidence level

Base: All respondents electing to answer

Table 3.10.2: Agreement with statements about protections and supports for children and young people by region (2022) (continued)

Q60 Column %	Total 2022	REGION			
% of respondents					
Young people are portrayed fairly in the media					
	Total 2022 n = 2500	South East n = 1249	Northern n = 502	Southern n = 499	Central n = 250
Strongly disagree	7	6	9	9	8
Disagree	33	30	38	34	32
SUB-TOTAL DISAGREE	40	36 ↓	47 ↑	42	40
No opinion	17	18	12	19	16
Agree	38	41	35	34	40
Strongly agree	5	5	6	5	4
SUB-TOTAL AGREE	43	46	41	39	44
Children and young people experiencing injustice and vulnerability are a priority for the Queensland Government					
	Total 2022 n = 2501	South East n = 1247	Northern n = 503	Southern n = 501	Central n = 250
Strongly disagree	9	7	10	12	10
Disagree	33	30	36	33	38
SUB-TOTAL DISAGREE	42	38 ↓	46	44	48
No opinion	15	17	14	15	12
Agree	36	38	35	34	35
Strongly agree	7	8	5	6	6
SUB-TOTAL AGREE	43	46	40	41	40

Blue ↑ / Red ↓ figures and arrows indicate the result is significantly higher/lower than the average at at least the 95% confidence level

Base: All respondents electing to answer

3.11 Oversight of the Queensland systems

Q60(g-h) How much do you agree or disagree with the following statements?
New question in 2022.

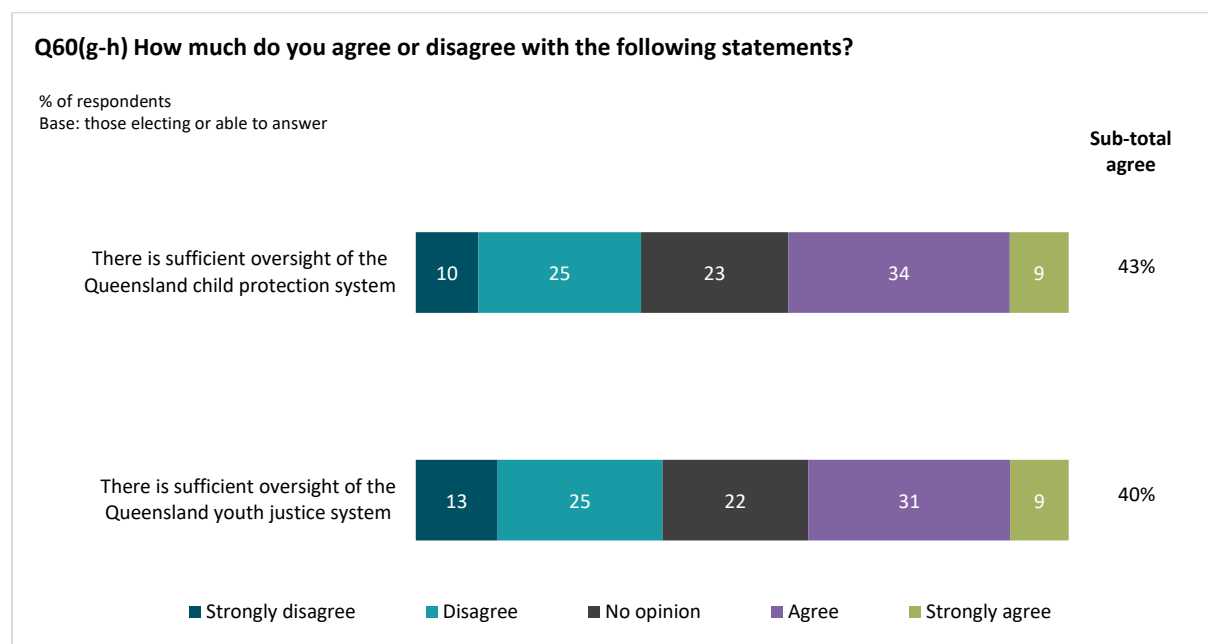
3.11.1 2022 results

Respondents were asked their level of agreement with statements about oversight of the Queensland child protection system and youth justice system.

Respondents were divided with their level of agreement (agree/strongly agree) and disagreement (disagree/strongly disagree) for these statements. 43% of respondents agreed that there is sufficient oversight of the Queensland child protection system while 35% disagreed with this statement. Similarly, 40% of respondents agreed that there is sufficient oversight of the Queensland youth justice system and 38% disagreed.

Compared with other measures, a relatively high proportion of 'no opinion' responses were registered in relation to these statements.

Figure 3.11.1: Oversight of Queensland systems (2022)



Respondents who declined to answer the question have been removed from the base when reporting results. The base is therefore different for each of the above statements. The smallest base was n=2498 (when 11 respondents declined to answer) for the item 'The involvement of young people in public life positively contributes to social cohesion'. The reader is referred to Table 3.10.1 for a description of the base for each statement.

3.11.2 Sub-group differences (2022)

Respondents aged under 40 years, those responsible for children aged 0-17 years or those who identify as Aboriginal and/or Torres Strait Islander were more likely than average to agree (agree/strongly agree) with statements related to there being sufficient oversight of the Queensland child protection and youth justice systems.

Respondents living in Northern Queensland were more likely than average to disagree (disagree/strongly disagree) that there is sufficient oversight of the Queensland youth justice system (45%, 38% average).

Other key sub-group differences are outlined in Tables 3.11.1 and 3.11.2 following.

Table 3.11.1: Oversight of Queensland systems by gender, age, responsibility for children and Aboriginal and/or Torres Strait Islander status (2022)

Q60 Column %	Total 2022	GENDER			AGE (years)				RESPONSIBLE FOR CHILD 0-17 YRS	ABORIGINAL AND/OR TORRES STRAIT ISLANDER		
% of respondents												
There is sufficient oversight of the Queensland child protection system												
	Total 2022 n = 2507	Male n = 1200	Female n = 1301	Non- binary n = 6^A	18-24 years n = 293	25-39 years n = 835	40-59 years n = 605	60+ years n = 774	Yes n = 859	No n = 1637	No n = 2283	Yes n = 224
Strongly disagree	10	11	9		5 ↓	7 ↓	10	13 ↑	9	10	9	13
Disagree	25	24	26	50	20	22 ↓	26	29 ↑	22	26	25	22
SUB-TOTAL DISAGREE	35	35	34	50	25 ↓	29 ↓	37	43 ↑	32	36	34	35
No opinion	23	22	23	33	24	20 ↓	22	26 ↑	18 ↓	25 ↑	23 ↑	13 ↓
Agree	34	36	32	17	44 ↑	41 ↑	30 ↓	25 ↓	38 ↑	32 ↓	34	38
Strongly agree	9	7 ↓	11 ↑		8	10	12 ↑	6 ↓	13 ↑	7 ↓	9	13
SUB-TOTAL AGREE	43	44	43	17	52 ↑	51 ↑	42	31 ↓	51 ↑	39 ↓	42 ↓	52 ↑
There is sufficient oversight of the Queensland youth justice system												
	Total 2022 n = 2504	Male n = 1197	Female n = 1301	Non- binary n = 6^A	18-24 years n = 291	25-39 years n = 835	40-59 years n = 605	60+ years n = 773	Yes n = 860	No n = 1633	No n = 2281	Yes n = 223
Strongly disagree	13	14	11 ↓	17	7 ↓	11	12	17 ↑	11	13	12	14
Disagree	25	27	24	50	19 ↓	23	25	31 ↑	23	26	26	21
SUB-TOTAL DISAGREE	38	41 ↑	35 ↓	67	25 ↓	33 ↓	37	48 ↑	34 ↓	40 ↑	38	35
No opinion	22	21	24	33	23	18 ↓	23	26 ↑	18 ↓	24 ↑	23 ↑	14 ↓
Agree	31	31	31		45 ↑	38 ↑	27	21 ↓	36 ↑	29 ↓	30 ↓	40 ↑
Strongly agree	9	7 ↓	11 ↑		7	11	12 ↑	6 ↓	12 ↑	7 ↓	9	11
SUB-TOTAL AGREE	40	38	42		52 ↑	49 ↑	39	26 ↓	47 ↑	36 ↓	39 ↓	51 ↑

Blue ↑/Red ↓ figures and arrows indicate the result is significantly higher/lower than the average at at least the 95% confidence level

Base: All respondents electing to answer

Table 3.11.2: Agreement with statements about protections and supports for children and young people by region (2022)

Q60 Column %	Total 2022	REGION			
% of respondents					
There is sufficient oversight of the Queensland child protection system					
	Total 2022 n = 2507	South East n = 1253	Northern n = 502	Southern n = 502	Central n = 250
Strongly disagree	10	9	10	9	10
Disagree	25	24	29	23	25
SUB-TOTAL DISAGREE	35	34	39	32	35
No opinion	23	23	18	28	18
Agree	34	34	35	31	35
Strongly agree	9	9	8	9	12
SUB-TOTAL AGREE	43	43	43	40	47
There is sufficient oversight of the Queensland youth justice system					
	Total 2022 n = 2504	South East n = 1251	Northern n = 503	Southern n = 501	Central n = 249
Strongly disagree	13	11	18 ↑	11	14
Disagree	25	25	27	24	25
SUB-TOTAL DISAGREE	38	35	45 ↑	36	39
No opinion	22	24	17 ↓	27	17
Agree	31	33	27	28	34
Strongly agree	9	8	11	9	10
SUB-TOTAL AGREE	40	41	38	37	45

Blue ↑ / Red ↓ figures and arrows indicate the result is significantly higher/lower than the average at at least the 95% confidence level

Base: All respondents electing to answer

3.12 Minimum age for a child to be incarcerated

Q61 Do you believe that children under the age of 14 should be incarcerated (that is, held in a police watchhouse or placed in youth detention)?

Q62 In your opinion, what is the minimum age a child should be incarcerated?

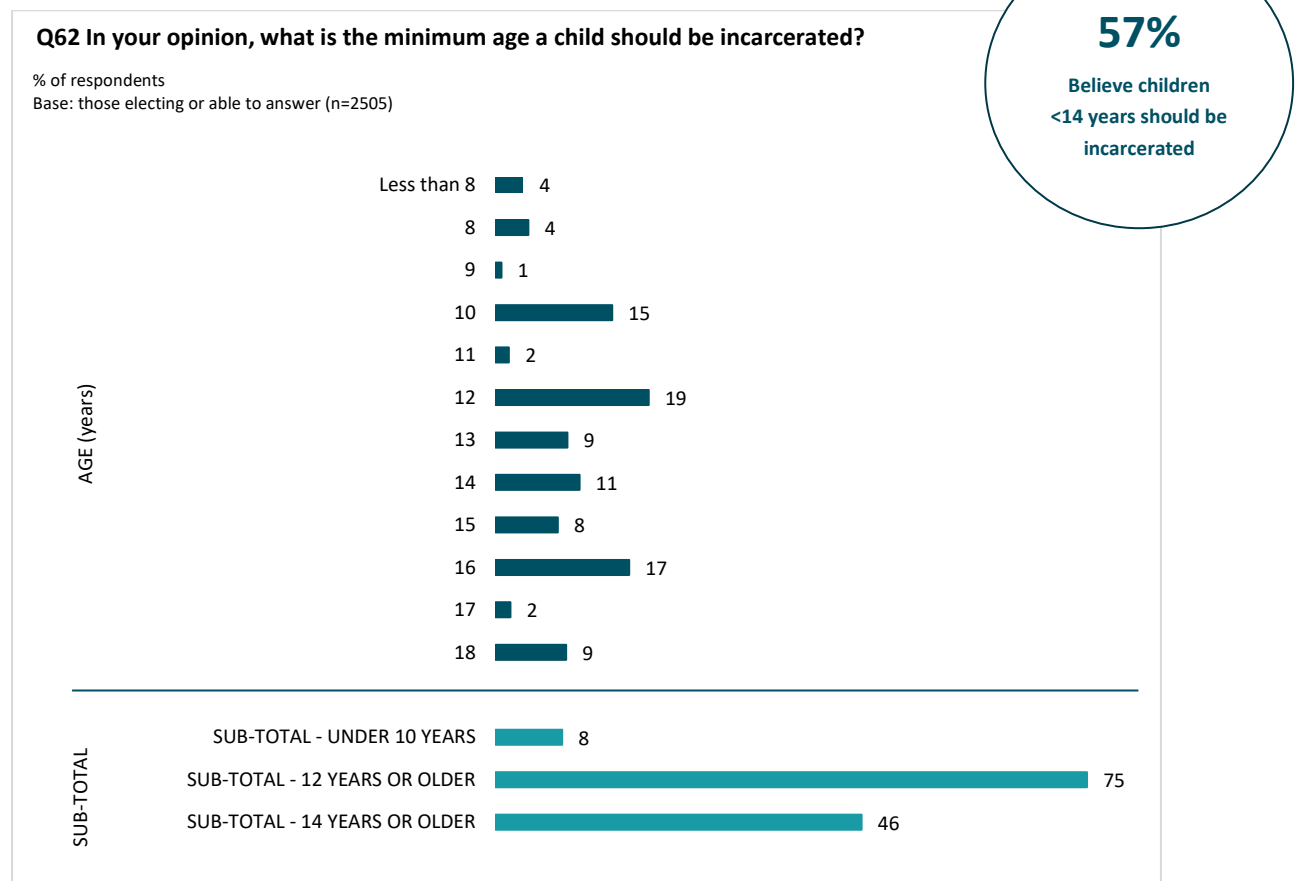
New question in 2022.

3.12.1 2022 results

The 2022 survey asked respondents if they believe that children under the age of 14 years should be incarcerated. More than half (57%) of respondents believed children under the age of 14 years should be able to be incarcerated.

Respondents were then asked what they thought the minimum age should be for a child to be incarcerated. Among those respondents who were able to provide an opinion, 46% indicated an age range of 14 years or older, 75% felt children aged 12 years or older could be incarcerated, while 8% indicated that children under 10 years should be incarcerated.

Figure 3.12.1: Minimum age for child incarceration (2022)



3.12.2 Sub-group differences (2022)

Males (61%), residents from Southern Queensland (63%) and respondents who do not identify as Aboriginal and/or Torres Strait Islander (59%) were all more likely to have a belief that children under the age of 14 years should be incarcerated compared to the average (57%).

Respondents who identify as Aboriginal and/or Torres Strait Islander were less likely than average to consider children under 14 years should be incarcerated (39%, 57% average) and were more likely to indicate that the minimum incarceration age should be within the 14-18 year old range (60%, 46% average).

Other sub-group differences can be found in Tables 3.12.1, 3.12.2, 3.12.3 and 3.12.4 following.

Table 3.12.1: Belief that children under the age of 14 years should be incarcerated by gender, age, responsibility for children and Aboriginal and/or Torres Strait Islander status (2022)

Q61 Column %	Total 2022 n = 2508	GENDER			AGE (years)				RESPONSIBLE FOR CHILD 0-17 YRS		ABORIGINAL AND/OR TORRES STRAIT ISLANDER	
		Male n = 1201	Female n = 1301	Non- binary n = 6^	18-24 years n = 292	25-39 years n = 836	40-59 years n = 605	60+ years n = 775	Yes n = 860	No n = 1637	No n = 2284	Yes n = 224

% of respondents

Q61. Do you believe that children under the age of 14 should be incarcerated (that is, held in a police watchhouse or placed in youth detention)?												
Yes	57	61 ↑	54 ↓	50	52	56	60	58	59	56	59 ↑	39 ↓
No	28	27	29	33	32	30	27	26	29	28	26 ↓	49 ↑
Don't know	15	12 ↓	17 ↑	17	16	15	13	15	13	16	15	12

Blue↑/Red↓ figures and arrows indicate the result is significantly higher/lower than the average at at least the 95% confidence level

Base: All respondents electing to answer

^ Caution small cell size

Table 3.12.2: Belief that children under the age of 14 years should be incarcerated by region (2022)

Q61 Column %	Total 2022 n = 2508	REGION			
		South East n = 1254	Northern n = 503	Southern n = 502	Central n = 249

% of respondents

Q61. Do you believe that children under the age of 14 should be incarcerated (that is, held in a police watchhouse or placed in youth detention)?					
Yes	57	53 ↓	60	63 ↑	61
No	28	31 ↑	29	22 ↓	26
Don't know	15	16	11 ↓	16	13

Blue↑/Red↓ figures and arrows indicate the result is significantly higher/lower than the average at at least the 95% confidence level

Base: All respondents electing to answer

Table 3.12.3: Minimum age child should be incarcerated by gender, age, responsibility for children and Aboriginal and/or Torres Strait Islander status (2022)

Q62 Column %	Total 2022 n = 2505	GENDER			AGE (years)				RESPONSIBLE FOR CHILD 0-17 YRS		ABORIGINAL AND/OR TORRES STRAIT ISLANDER	
		Male n = 1200	Female n = 1299	Non- binary n = 6 [^]	18-24 years n = 293	25-39 years n = 833	40-59 years n = 604	60+ years n = 775	Yes n = 859	No n = 1635	No n = 2282	Yes n = 223

% of respondents

Q62. In your opinion, what is the minimum age a child should be incarcerated?												
Less than 8	4	5	3		3	4	4	3	4	3	3	5
8	4	5	4		4	4	4	5	4	4	4	4
9	1	1	1		2	0	0	1	0	1	1	0
10	15	15	15		12	16	15	15	16	14	15	10
11	2	2	2		4 ↑	2	1	1	2	2	2	0
12	19	20	19	17	19	19	19	21	18	20	20	12
13	9	10	9	17	9	9	10	8	10	9	9	8
14	11	10	11		9	10	9	13	11	10	11	8
15	8	8	8	33	9	9	7	7	8	8	8	8
16	17	15	18	33	21	16	17	17	16	17	17	19
17	2	2	2		1	2	2	2	2	2	2	4
18	9	8	10		6	9	11	8	10	9	8 ↓	21 ↑
SUB-TOTAL - UNDER 10 YEARS	8	10	7		9	8	9	9	8	9	8	10
SUB-TOTAL - 12 YEARS OR OLDER	75	74	76	100	74	75	75	75	74	75	75	80
SUB-TOTAL - 14 YEARS OR OLDER	46	44	49	67	47	47	46	46	47	46	45 ↓	60 ↑

Blue ↑ / Red ↓ figures and arrows indicate the result is significantly higher/lower than the average at at least the 95% confidence level

Base: those with children or those aged under 26 years who had tried to access youth mental health services in past three years

[^] Caution small cell size

Table 3.12.4: Minimum age child should be incarcerated by region (2022)

Q62 Column %	Total 2022 n = 2505	REGION			
		South East n = 1252	Northern n = 502	Southern n = 502	Central n = 249
% of respondents					
Q62. In your opinion, what is the minimum age a child should be incarcerated?					
Less than 8	4	3	6	5	2
8	4	3	7	5	4
9	1	1	1	1	0
10	15	14	14	19	16
11	2	2	1	2	1
12	19	20	18	19	21
13	9	8	9	10	12
14	11	12	8	11	12
15	8	9	9	6	5
16	17	19	16	13	18
17	2	2	2	2	1
18	9	9	11	8	8
SUB-TOTAL - UNDER 10 YEARS	8	6 ↓	13 ↑	10	6
SUB-TOTAL - 12 YEARS OR OLDER	75	78 ↑	73	69 ↓	77
SUB-TOTAL - 14 YEARS OR OLDER	46	50 ↑	45	39 ↓	44

Blue↑/Red↓ figures and arrows indicate the result is significantly higher/lower than the average at at least the 95% confidence level
 Base: those with children or those aged under 26 years who had tried to access youth mental health services in past three years

4. Appendices

Appendix A – Survey Items

No.	Item	Response scale
	What is your residential postcode? NO CHANGES REQUIRED TO PREVIOUS MAPPING	
Q1	<i>Exit message if not a Queensland postcode:</i> Thank you for your interest in completing this survey. We are interested in the views of people who live in Queensland.	Free text (4 numerical spaces)
Q2	In what year were you born?	Free text (2-4 numerical spaces)
Q11	How do you describe your gender?	<input type="checkbox"/> Man or male <input type="checkbox"/> Woman or female <input type="checkbox"/> Non-binary <input type="checkbox"/> I use a different term
Q12	Do you identify as an Aboriginal and/or Torres Strait Islander person?	<input type="checkbox"/> Yes, Aboriginal person <input type="checkbox"/> Yes, Torres Strait Islander person <input type="checkbox"/> Yes, Aboriginal and Torres Strait Islander person <input type="checkbox"/> No
Q13	Are you currently responsible for the care of a child aged 0-17 years?	<input type="checkbox"/> Yes <input type="checkbox"/> No
Q14	Are you currently, or have you in the past five years, been in contact with the child protection and family support system as: a) A parent b) A child c) A carer d) A child protection and family support system worker or service provider? e) In any other professional capacity (e.g. a doctor, nurse, teacher, etc.)	<input type="checkbox"/> Yes <input type="checkbox"/> No
Q7	If you were concerned about a child's safety or wellbeing, which organisations or individuals would you report this to?	Free text
Q10I	Overall, I have confidence and trust in the Queensland child protection system	<input type="checkbox"/> Strongly disagree <input type="checkbox"/> Disagree <input type="checkbox"/> Agree <input type="checkbox"/> Strongly agree <input type="checkbox"/> No opinion <input type="checkbox"/> Don't know

No.	Item	Response scale
Q51	In my community, children and young people:	
	a) are protected from abuse and neglect	<input type="checkbox"/> Strongly disagree
	b) are supported to live safely at home with their families	<input type="checkbox"/> Disagree
	c) live in safe communities	<input type="checkbox"/> Agree
	d) can access the services they need to stay healthy, such as GPs	<input type="checkbox"/> Strongly agree
	e) can access mental health services if needed	<input type="checkbox"/> No opinion
	f) can access disability services if needed	<input type="checkbox"/> Don't know
	g) can access early childhood education and care, such as kindergarten	
	h) have support to stay engaged in learning at school or TAFE	
	i) can access sporting, recreational or community activities	
	j) are supported to connect with their culture (for Aboriginal and Torres Strait Islander children and young people)	
Q52	I have a good working understanding of the United Nations <i>Convention on the Rights of the Child</i>	<input type="checkbox"/> Strongly disagree <input type="checkbox"/> Disagree <input type="checkbox"/> Agree <input type="checkbox"/> Strongly agree <input type="checkbox"/> No opinion
Q53	How much do you agree or disagree that decisions are made in children's and young people's best interests by the following systems?	<input type="checkbox"/> Strongly disagree
	a) education system	<input type="checkbox"/> Disagree
	b) health system	<input type="checkbox"/> Agree
	c) mental health system	<input type="checkbox"/> Strongly agree
	d) disability service system	<input type="checkbox"/> No opinion
	e) public housing system	<input type="checkbox"/> Don't know
	f) child protection and family support system	
	g) youth justice system	
Q54	How much do you agree or disagree that the views of children and young people are listened to and valued by the following systems?	<input type="checkbox"/> Strongly disagree
	a) education system	<input type="checkbox"/> Disagree
	b) health system	<input type="checkbox"/> Agree
	c) mental health system	<input type="checkbox"/> Strongly agree
	d) disability service system	<input type="checkbox"/> No opinion
	e) public housing system	<input type="checkbox"/> Don't know
	f) child protection and family support system	
	g) youth justice system	
Q55	Do you feel that children and young people from any of the following groups experience discrimination in terms of having their rights upheld?	
	Children and young people:	<input type="checkbox"/> Always
	a) who identify as Aboriginal or Torres Strait Islander	<input type="checkbox"/> Often
	b) who identify as LGBTIQ+	<input type="checkbox"/> Sometimes
	c) with a disability	<input type="checkbox"/> Rarely
	d) living in rural and remote areas	<input type="checkbox"/> Never
	e) experiencing poverty	<input type="checkbox"/> Don't know
	f) who are refugees or asylum seekers	
	g) from culturally and linguistically diverse backgrounds	
	h) in contact with the child protection system	
	i) in contact with the youth justice system	
Q56	How much do you agree or disagree with the following statements about youth mental health services in your area?	<input type="checkbox"/> Strongly disagree
	Youth mental health services in my area are:	<input type="checkbox"/> Disagree
	a) accessible (services are available in the area)	<input type="checkbox"/> Agree
	b) timely (services have enough capacity to meet demand without waitlists)	<input type="checkbox"/> Strongly agree
	c) affordable	<input type="checkbox"/> No opinion
	d) culturally appropriate	<input type="checkbox"/> Don't know

No.	Item	Response scale
Q57	<i>Only ask if 'yes' to Q13 or ≥ 1996 for Q2</i>	<input type="checkbox"/> Yes
	Have you tried to access youth mental health services in the last three years?	<input type="checkbox"/> No
Q58	<i>Only ask if 'yes' to Q57</i>	<input type="checkbox"/> Yes
	Did you experience any barriers to accessing youth mental health services?	<input type="checkbox"/> No
Q59	<i>Only ask if 'yes' to Q58</i>	<input type="checkbox"/> Not aware of services in my area
	What barriers did you experience? [tick all that apply]	<input type="checkbox"/> Not sure how to get a referral / mental health care plan <input type="checkbox"/> No services in my area <input type="checkbox"/> Services had long waitlists <input type="checkbox"/> No transport to access services <input type="checkbox"/> Could not afford the cost of the services <input type="checkbox"/> Services were not culturally appropriate <input type="checkbox"/> Pre-existing relationships with service providers <input type="checkbox"/> Other (please specify)
Q60	How much do you agree or disagree with the following statements?	
	a) The community prioritises the safety and wellbeing of children and young people b) The Queensland Government prioritises the safety and wellbeing of children and young people c) Children and young people experiencing injustice and vulnerability are a priority for the Queensland Government d) Young people are portrayed fairly in the media e) Everyone in a community, including young people, should have the opportunity to contribute to discussions about social issues that affect them f) The involvement of young people in public life positively contributes to social cohesion g) There is sufficient oversight of the Queensland child protection system h) There is sufficient oversight of the Queensland youth justice system	<input type="checkbox"/> Strongly disagree <input type="checkbox"/> Disagree <input type="checkbox"/> Agree <input type="checkbox"/> Strongly agree <input type="checkbox"/> No opinion
Q61	Do you believe that children under the age of 14 should be incarcerated (that is, held in a police watchhouse or placed in youth detention)?	<input type="checkbox"/> Yes <input type="checkbox"/> No <input type="checkbox"/> Don't know
Q62	In your opinion, what is the minimum age a child should be incarcerated?	<input type="checkbox"/> Less than 8 <input type="checkbox"/> 8 <input type="checkbox"/> 9 <input type="checkbox"/> 10 <input type="checkbox"/> 11 <input type="checkbox"/> 12 <input type="checkbox"/> 13 <input type="checkbox"/> 14 <input type="checkbox"/> 15 <input type="checkbox"/> 16 <input type="checkbox"/> 17 <input type="checkbox"/> 18

Appendix B – Sample Composition

GENDER		Survey year				
Column %		2017	2019	2020	2021	2022
n		n = 1703	n = 2503	n = 2530	n = 2520	n = 2509
Male		47%	50%	48%	47%	48%
	n =	800	1250	1225	1,192	1,201
Female		53%	50%	51%	52%	52%
	n =	898	1250	1298	1,320	1,302
Non-binary		<1%	<1%	<1%	<1%	<1%
	n =	5	3	7	8	5
Use a different term						<1%
	n =					1

AGE		Survey year				
Column %		2017	2019	2020	2021	2022
n		n = 1703	n = 2503	n = 2530	n = 2520	n = 2509
18-24 years		8%	10%	10%	8%	12%
	n =	130	251	265	208	293
25-39 years		28%	35%	35%	33%	33%
	n =	485	875	875	828	836
40-59 years		34%	25%	26%	26%	24%
	n =	585	626	654	661	605
60+ years		30%	30%	29%	33%	31%
	n =	503	751	736	823	775

IDENTIFY AS Aboriginal and/or Torres Strait Islander person		Survey year				
Column %		2017	2019	2020	2021	2022
n		n = 1694	n = 2503	n = 2530	n = 2520	n = 2509
Yes, Aboriginal person		7%	8%	5%	7%	6%
	n =	116	197	138	167	148
Yes, Torres Strait Islander person		1%	1%	1%	<1%	1%
	n =	21	13	28	7	25
Yes, Aboriginal and Torres Strait Islander person		1%	1%	1%	1%	2%
	n =	16	23	29	16	51
SUB-TOTAL Aboriginal and/or Torres Strait Islander person		9%	9%	8%	8%	9%
	n =	153	233	195	190	224
No		91%	91%	92%	92%	91%
	n =	1541	2270	2335	2330	2285

RESPONSIBLE FOR CARE OF CHILD		Survey year				
Column % n		2017 n = 1696	2019 n = 2498	2020 n = 2525	2021 n = 2520	2022 n = 2509
Yes		31%	32%	31%	33%	34%
	n =	530	803	791	821	860
No		69%	68%	69%	67%	66%
	n =	1166	1695	1734	1,697	1638

REGION		Survey year				
Column % n		2017 n = 1703	2019 n = 2503	2020 n = 2530	2021 n = 2520	2022 n = 2509
South East		54%	50%	51%	52%	50%
	n =	922	1252	1281	1,319	1254
Northern		18%	19%	19%	20%	20%
	n =	312	476	475	500	503
Southern		19%	19%	19%	18%	20%
	n =	322	475	475	452	502
Central		9%	12%	12%	10%	10%
	n =	147	300	299	249	250

Appendix C – Fieldwork report

Online method

Sub-contractor: Ipsos.

Dates of Fieldwork: 25 May to 13 June 2022.

Average (median) survey length: 7 minutes.

Sample sources: Four panels were used - I-say/Ipsos Panel (35%), PureProfile (14%), Octopus (29%), Fulcrum (22%). All panels have ISO 20252 accreditation.

In the total online sample of completed surveys, 132 surveys were collected with Queenslanders who identify as Aboriginal and/or Torres Strait Islander and 2,285 with those who do not identify as Aboriginal and/or Torres Strait Islander (2,417 surveys in total).

Offline method

Sub-contractor: Ipsos via their in-house specialist Aboriginal and Torres Strait Research Unit (ATSIRU). The interviews were conducted in language where necessary. Four interviewers were used in regional areas (Torres Strait, Cairns, Doomadgee and Townsville).

Dates of Fieldwork: 25 May to 14 June 2022.

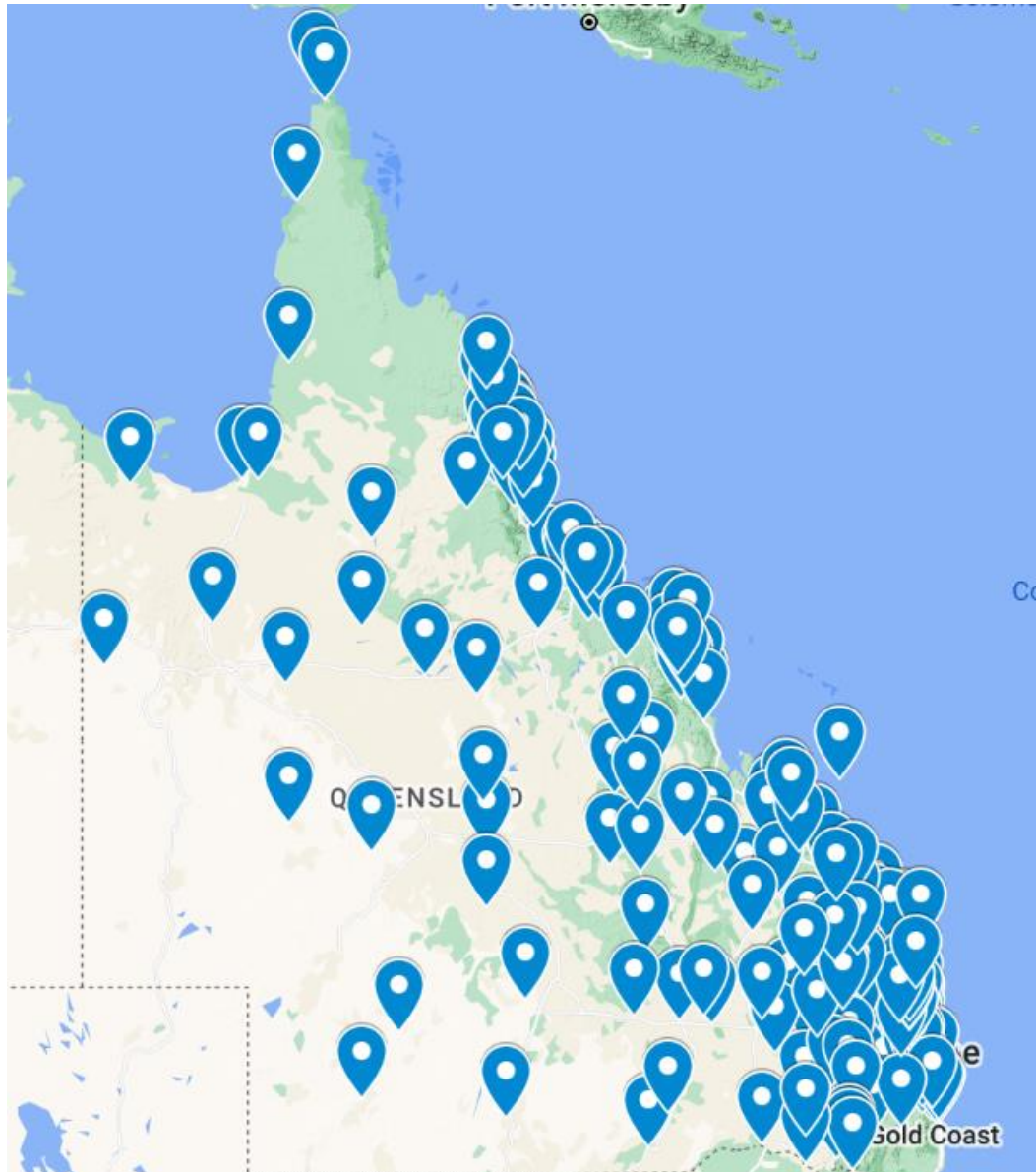
Average (median) survey length: 16 minutes.

Sample sources: ATSIRU Team Leaders use their networks and local knowledge to approach people either via phone or face-to-face (and in a small number of cases via a link to the online survey to self-complete) in their communities to complete the interview.

The offline method comprised a mix of face-to-face interviewing (n=64), telephone interviewing (n=23) and self-completion (via a link to the online survey) (n=5) surveying.

Distribution of interviews

The map below shows the location of respondents who took part in the survey in 2022. Each flag represents a postcode where at least one interview was completed.



Appendix D – Sampling error chart

All sample surveys and polls, whether or not they use probability sampling, are subject to multiple sources of error which are most often not possible to quantify or estimate, including sampling error, coverage error, error associated with non-response, error associated with question wording and response options and post survey weighting and adjustments. Therefore, MCR avoids the words ‘margin of error’ as they are not able to be verified. All that can be calculated are different possible sampling errors with different probabilities of pure, unweighted, random samples with 100% response rates. These are only theoretical because no published surveys come close to this ideal. At the absolute minimum, sampling error based on various cell sizes for this survey could fall within the following ranges (at the 95% confidence level).

Sample size	10/90	20/80	30/70	40/60	50/50
100	±6.0	±8.0	±9.2	±9.8	±10.0
200	±4.2	±5.6	±6.5	±6.9	±7.0
300	±3.5	±4.6	±5.3	±5.7	±5.8
400	±3.0	±4.0	±4.6	±4.9	±5.0
500	±2.7	±3.6	±4.1	±4.4	±4.5
600	±2.4	±3.3	±3.7	±4.0	±4.1
700	±2.3	±3.0	±3.5	±3.7	±3.8
800	±2.1	±2.8	±3.2	±3.5	±3.5
900	±2.0	±2.4	±3.1	±3.3	±3.3
1000	±1.9	±2.5	±2.9	±3.1	±3.2
1100	±1.8	±2.4	±2.7	±2.9	±3.0
1200	±1.7	±2.3	±2.6	±2.8	±2.8
1300	±1.6	±2.2	±2.5	±2.7	±2.7
1400	±1.6	±2.1	±2.4	±2.6	±2.6
1500	±1.5	±2.0	±2.3	±2.5	±2.5
1600	±1.5	±2.0	±2.3	±2.4	±2.5
1700	±1.4	±1.9	±2.2	±2.3	±2.4
1800	±1.4	±1.9	±2.1	±2.3	±2.3
1900	±1.4	±1.8	±2.1	±2.2	±2.3
2000	±1.3	±1.8	±2.0	±2.2	±2.2
2100	±1.3	±1.7	±2.0	±2.1	±2.1
2200	±1.3	±1.7	±1.9	±2.1	±2.1
2300	±1.2	±1.6	±1.9	±2.0	±2.0
2400	±1.2	±1.6	±1.8	±2.0	±2.0
2500	±1.2	±1.6	±1.8	±1.9	±2.0

Appendix E – Regional boundaries

Throughout the tables in this report, the data has been reported on a regional basis, with these four regions being:

1. South East Queensland (North and South)
2. Southern Queensland
3. Central Queensland
4. Northern Queensland

